

MECHANICAL EQUIPMENT

Products

Imported Industrial

MECHANICAL EQUIPMENT

Products

Industrial, Off Highway & Rail

Imported Industrial Products

BRB Mounts



BRB

DESCRIPTION

The BRB type AMC Mecanocaucho® mounts are antivibration elements which work the rubber in shear and compression. Their tall height section produce large deflections, low natural frequencies, and excellent vibration isolation results. This range of mounts is suitable for applications where high vibration isolation in the 85-95% range is a priority.

TECHNICAL CHARACTERISTICS

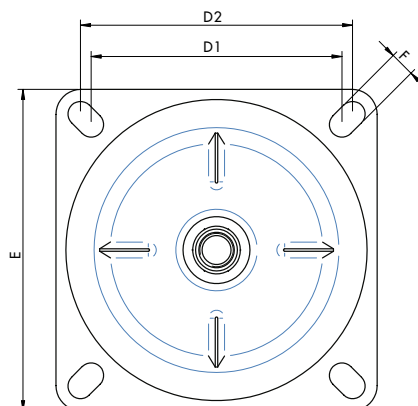
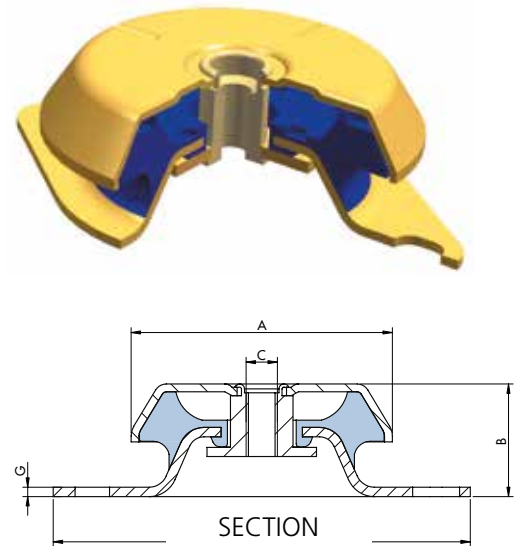
- The top metal hood protects the rubber from the Ozone, UV rays, diesel or oils which damage the rubber.
- The metal parts have a suitable anticorrosive treatment for outdoor applications. RoHS compliant.

- They have an interlocking metal component that provides a fail-safe protection for mobile applications. This device limits the ascending vertical movement when the mounting is submitted to shocks at traction.
- The mounts are clearly identified, as the baseplates are engraved with the type and hardness, which makes it possible to easily recognise the part even after several years of use.
- The hood has a cross stamped on the top, which enhances its rigidity on mobile applications and also improves the evacuation of oils or liquids that precipitate onto it.

APPLICATIONS

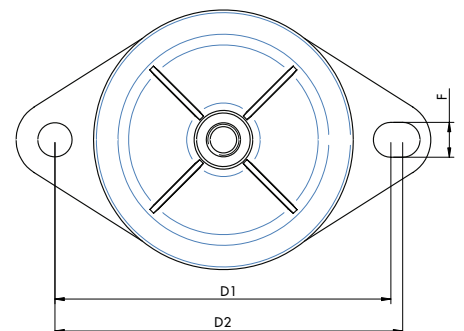
This mount is suitable for the isolation of mobile rotating machines which are exposed to axial and radial shocks, dripping oil, diesel or exposure to the weather. It is particularly interesting for applications where a high level of vibration isolation is required.

TYPE	AMC	Hardness			
		40 Sh	50 Sh	60 Sh	70 Sh
BRB 50	Max. Load (Kg.)	20	40	50	80
BRB 60	Max. Load (Kg.)	30	45	65	75
BRB 65	Max. Load (Kg.)	50	75	120	140
BRB 70	Max. Load (Kg.)	50	75	120	140
BRB 80 M10	Max. Load (Kg.)	80	130	175	235
BRB 80 M12	Max. Load (Kg.)	80	130	175	235
BRB 110 M12	Max. Load (Kg.)	200	305	420	450
BRB 110 M16	Max. Load (Kg.)	200	305	420	450
BRB 125	Max. Load (Kg.)	310	450	700	900
BRB 150	Max. Load (Kg.)	450	570	800	1000
BRB 180	Max. Load (Kg.)	875	1110	1700	2630
BRB 220	Max. Load (Kg.)	1600	2400	3400	4200



BRB 150 S. B.
BRB 180
BRB 220

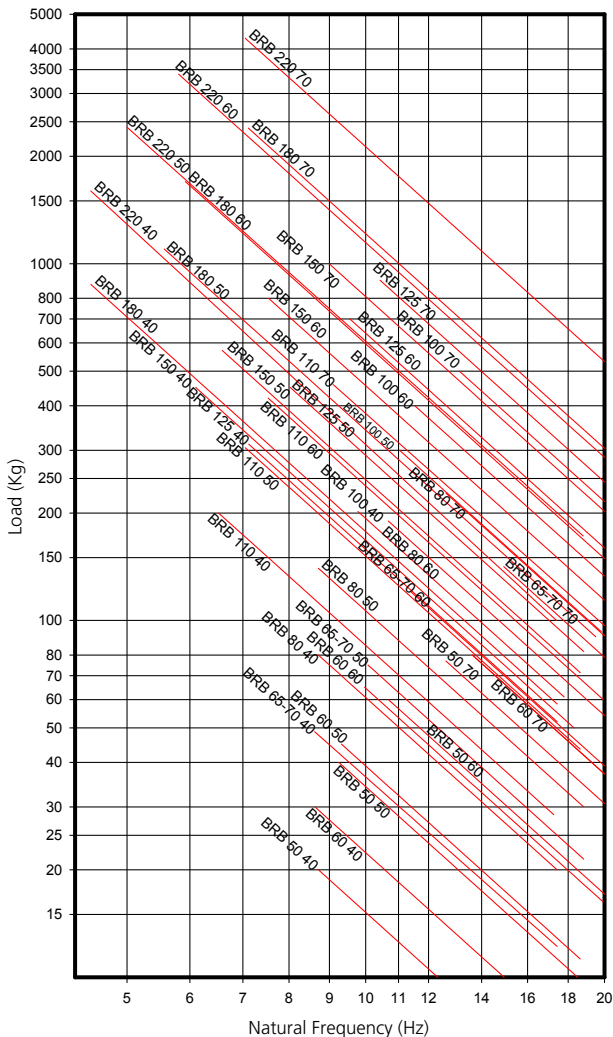
BRB 50
BRB 60
BRB 65
BRB 70
BRB 80
BRB 95
BRB 110
BRB 125
BRB 150



TYPE	A	B	C	D1 (Mín.)	D2 (Máx.)	E	F	G	CODE 40 SH	CODE 50 SH	CODE 60 SH	CODE 70 SH	WEIGHT (gr.)
BRB 50	50	25	M-8	61	70	85	6,5	2	135451	135453	135455	135457	100
BRB 60	64	35	M-10	76,5	90,5	110	9	2,5	135101	135405	135103	135104	225
BRB 65 M10	64	35	M-10	76,5	90,5	110	9	2,5	135421	135422	135423	135424	243
BRB 65 M12	64	35	M-12	76,5	90,5	110	9	2,5	135431	135252	135253	135254	243
BRB 70	64	35	M-12	100	100	120	11	3	135251	135252	135253	135254	253
BRB 80 M10	83	35	M-10	108	112	135	11	3	135231	135232	135233	135234	398
BRB 80 M12	83	35	M-12	108	110	130	9	3	135275	135276	135277	135278	398
BRB 110 M12	106	41	M-12	137	150	175	13	3	135241	135242	135243	135244	857
BRB 110 M16	106	41	M-16	137	150	175	13	3	135331	135332	135333	135334	857
BRB 125	123	48	M-16	154	162	190	14	4	135618	135620	135622	135624	1170
BRB 150 B.C. Square base	155	53,5	M-16	125	132	164	14,5	4	135205	135206	135207	135208	2030
BRB 150	155	53,5	M-16	176	188	218	14,5	4	135161	135162	135163	135164	1840
BRB 180	186	84	M-20	146	150	180	14	5	135391	135392	135393	135394	3100
BRB 220	225	105	M-24	180	180	220	19	6	135201	135200	135202	135203	6716

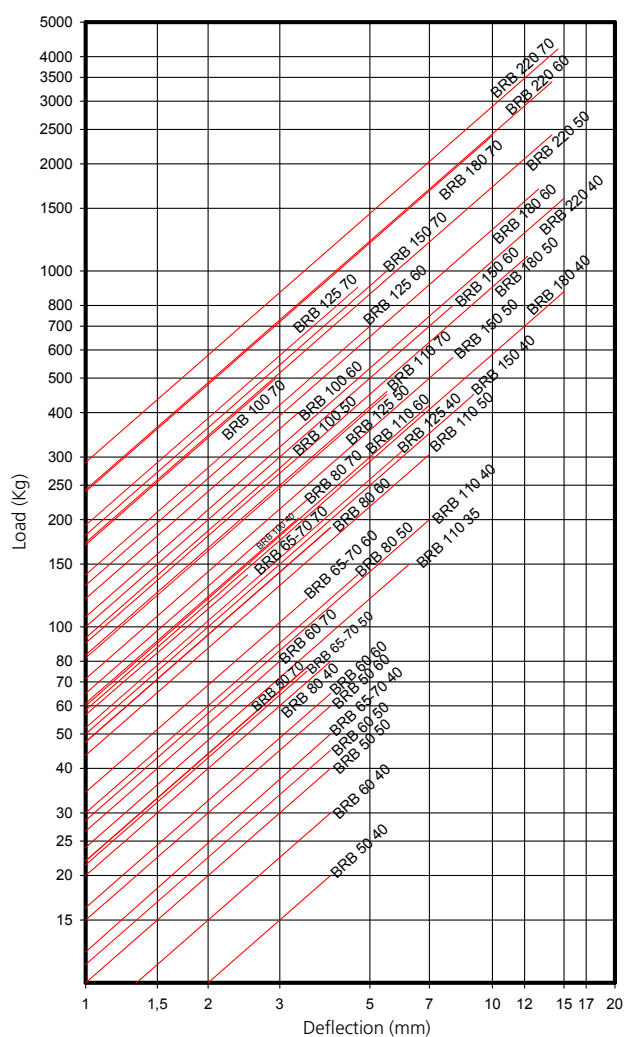
DYNAMIC BRB

NATURAL FREQUENCIES
AMC-MECANOCAUCHO® BRB TYPE



DEFLECTION BRB

LOAD DEFLECTION GRAPHS
AMC-MECANOCAUCHO® BRB TYPE



* In order to adapt its products to the state of the art, AMC .A. reserves the right to modify the conception and manufacture of the materials presented in this catalogue without prior notice

MECHANICAL EQUIPMENT

Products

Industrial, Off Highway & Rail

Imported Industrial Products

BSB Mounts



BSB

DESCRIPTION

The BSB type Amc-Mecanocaucho® mounts are antivibration elements which work the rubber in shear and compression with an optimal ratio of stiffness and horizontal stability. These mounts are really interesting when stability is a priority in an antivibration suspension.

In applications where the degree of isolation is a priority, we must choose the BRB-type range of Amc-Mecanocaucho® antivibration mounts.

TECHNICAL CHARACTERISTICS

- The top metal hood protects the rubber from the Ozone, UV rays, diesel or oils which may cause major damage to the rubber.
- The metal parts have a suitable anticorrosive treatment for outdoor applications. RoHs compliant.

- They have an interlocking metal component that provides a fail-safe protection for mobile applications. This device limits the ascending vertical movement when the mounting is submitted to shocks at traction.
- The mounts are clearly identified, as the baseplates are engraved with the type and hardness, which makes it possible to easily recognise the part even after several years of use.
- The hood has a cross stamped on the top, which enhances its stiffness on mobile applications and also improves the evacuation of oils or liquids that splash onto it.

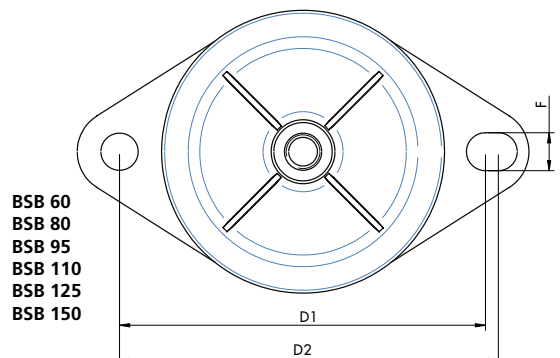
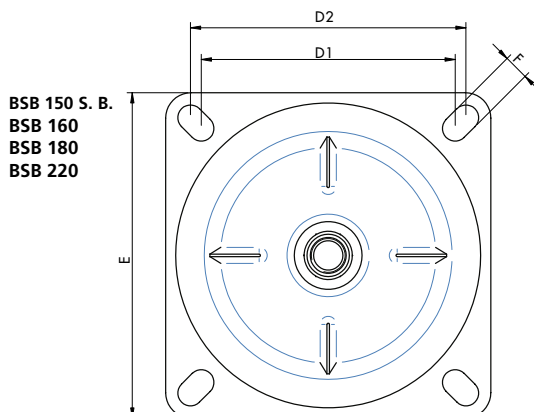
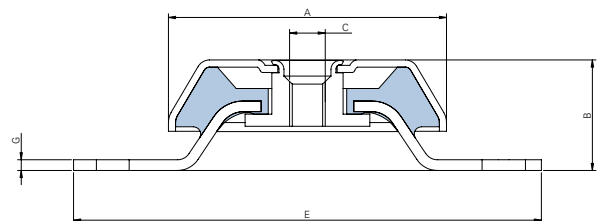
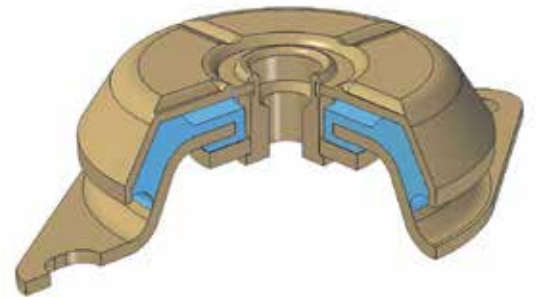
APPLICATIONS

In mobile rotating machines that require control of movements and reasonable values of vibrations and noise, such as:

- Pumps, Marine-Land auxiliary units, Industrial Vehicles, Compressors, Ventilators...

This mount is suitable for the isolation of mobile rotating machines which are exposed to axial and radial shocks, dripping oil or diesel or exposure to the weather.

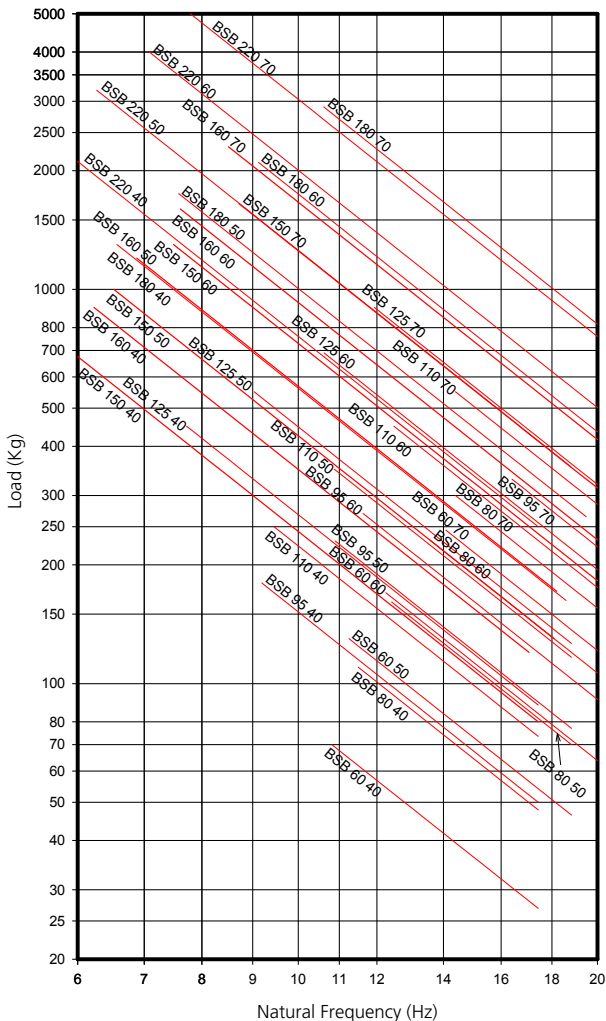
TYPE	AMC	Hardness	Hardness	Hardness	Hardness
		40 Sh	50 Sh	60 Sh	70 Sh
BSB 60	Max. Load (Kg)	70	130	170	245
BSB 80 M10	Max. Load (Kg)	110	161	231	300
BSB 80 M12	Max. Load (Kg)	110	161	231	300
BSB 95 M10	Max. Load (Kg)	180	230	270	330
BSB 95 M12	Max. Load (Kg)	180	230	270	330
BSB 110 M12	Max. Load (Kg)	250	350	450	550
BSB 110 M16	Max. Load (Kg)	250	350	450	550
BSB 125	Max. Load (Kg)	450	550	690	900
BSB 150	Max. Load (Kg)	750	950	1300	1650
BSB 160	Max. Load (Kg)	900	1200	1600	2300
BSB 180	Max. Load (Kg)	1300	1750	2100	2900
BSB 220	Max. Load (Kg)	2500	3200	4000	5000



TYPE	A	B	C	D1 (Min.)	D2 (Max.)	E	F	G	CODE 40 Sh	CODE 50 Sh	CODE 60 Sh	CODE 70 Sh	CODE 75 Sh	WEIGHT (gr)
BSB 60	64	35	M-10	76,5	90,5	110	9	2,5	135106	135109	135107	135108	*	235
BSB 80 M10	78	31	M-10	108,2	112,2	130	9,2	3	135261	135262	135263	135264	*	355
BSB 80 M12	78	31	M-12	108,2	112,2	130	9,2	3	135265	135266	135267	135268	*	351
BSB 95 M10	92	34	M-10	122	126,4	150	10	3	135311	135312	135313	135314	*	488
BSB 95 M12	92	34	M-12	122	126,4	150	10	3	135315	135316	135317	135318	*	488
BSB 110 M12	106	37	M-12	137	150	175	13	3	135335	135336	135337	135338	*	785
BSB 110 M16	106	37	M-16	137	150	175	13	3	135150	135151	135152	135153	*	785
BSB 125	123	43	M-16	154	162	190	14	4	135351	135352	135353	135354	135355	1109
BSB 150 Square base	155	49	M-16	125	132	164	14,5	4	135371	135372	135373	135374	*	2060
BSB 150	155	49	M-16	176	188	218	14,5	4	135361	135362	135363	135364	*	1818
BSB 160	155	57	M-20	140	140	170	14,5	4	135381	135382	135383	135384	*	
BSB 180	180	67	M-20	149	163	192	14,5	4	135181	135184	135182	135183	*	2914
BSB 220	225	105	M-24	180	180	220	19	6	135301	135302	135303	135304	*	6716

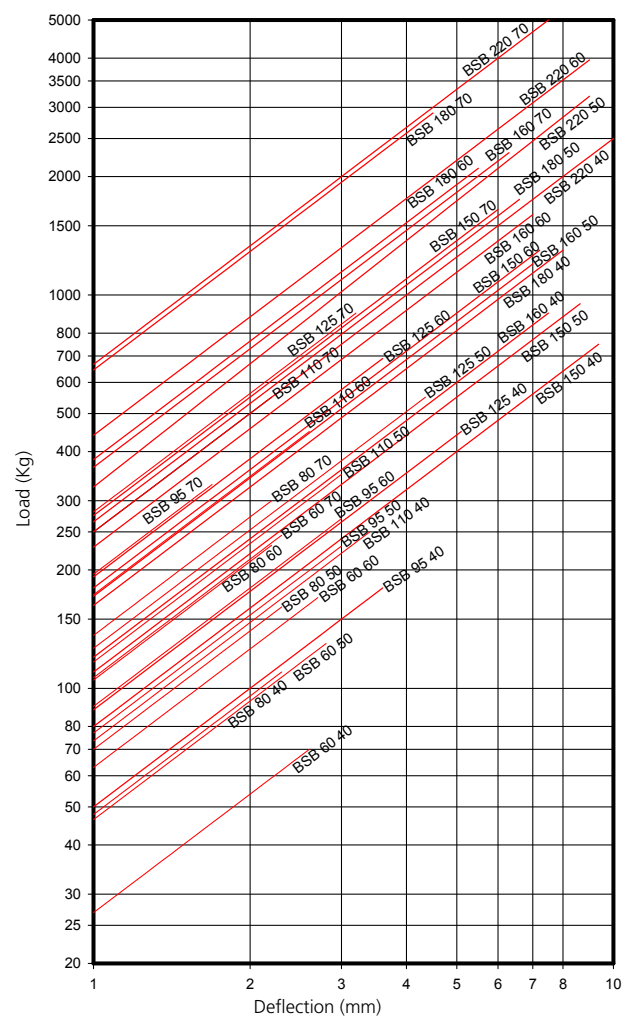
DYNAMIC BSB

AMC NATURAL FREQUENCIES
MECANOCAUCHO® BSB TYPE



BSB DEFLECTION

AMC LOAD DEFLECTION GRAPHS
MECANOCAUCHO® BSB TYPE



* In order to adapt its products to the state of the art, AMC .A. reserves the right to modify the conception and manufacture of the materials presented in this catalogue without prior notice

MECHANICAL EQUIPMENT

Products

Industrial, Off Highway & Rail

Imported Industrial Products

Marine Mounts



MARINE MOUNTS

DESCRIPTION

The Marine-type AMC-Mecanocaucho® mounts are ideal for mobile applications thanks to their rugged architecture.

Their special design offers different stiffnesses on the three axes, they are antivibration mounts with great vertical elasticity, great longitudinal stiffness and optimal lateral stiffness to offer extra isolation on this axis.

TECHNICAL CHARACTERISTICS

-The top part of the hood has a cross-shaped stamp, which improves its stiffness in mobile applications and also improves the evacuation of oils or liquid which splash onto it.

-The metal parts have an anticorrosive treatment which is suitable for outdoor applications. RoHs compliant.

-The mounts are clearly identified, as the bases are engraved with the type and hardness.

-They have an interlocking metal component that provides a fail-safe protection for mobile applications. This device limits the ascending vertical movement when the mounting is submitted to shocks at traction.

-The top part protects the elastomer inside from possible dripping oil, diesel, ozone and ultraviolet emissions that may cause major damage to the rubber.

-For marine engine applications, contact the AMC-Mecanocaucho® technical department.

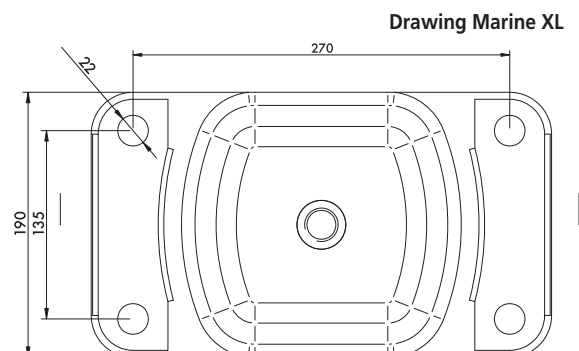
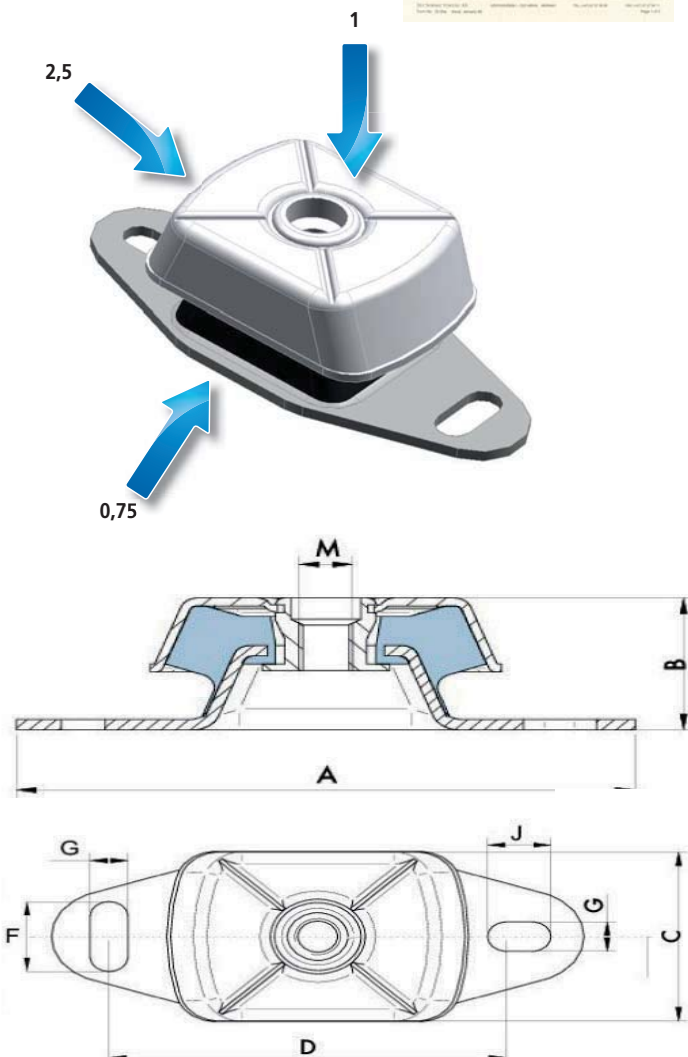
The different stiffnesses for each axis make it possible to offer major flexibility in the direction perpendicular to the crankshaft/shaft of the motor. This provides more effective isolation from vibrations of all types of engines.

APPLICATIONS

In mobile rotating machines that need a major isolation capacity from vibrations and noises, such as:

- Pumps
- Marine-Land units
- Mobile electrical panels
- Industrial vehicles
- Compressors
- Ventilators
- Marine Propellers

Marine Certificate



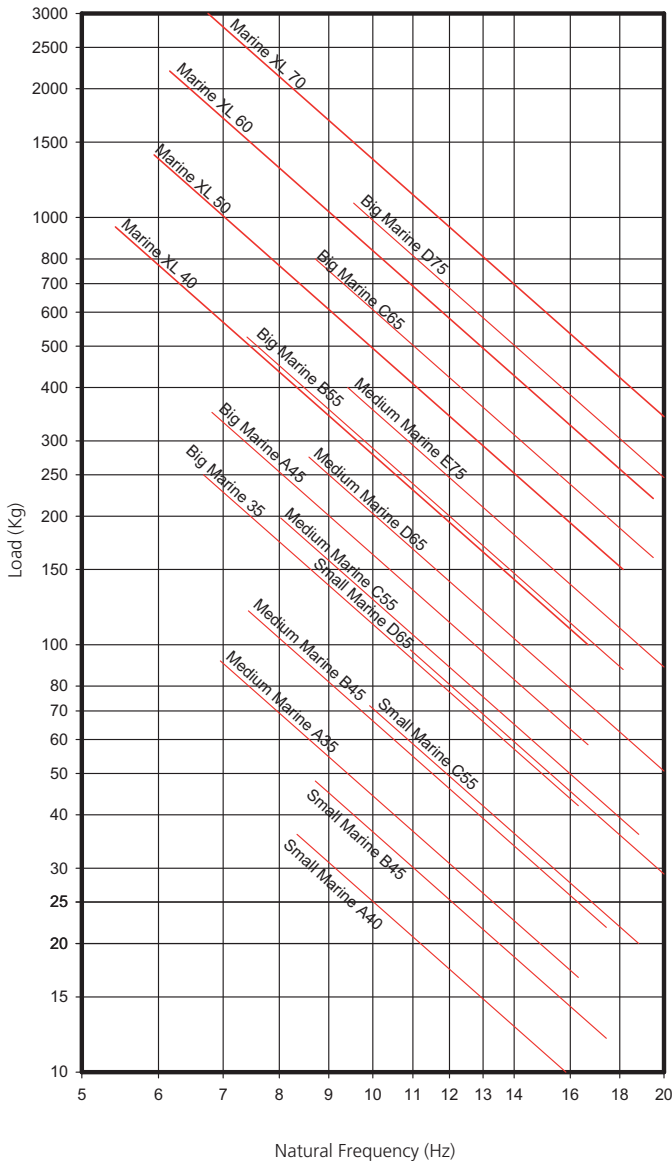
MARINE TYPE MOUNT

* Manufacture under request.

TYPE	A	B	C	D	F	G	J	M	AMC	CODE 35 Sh	CODE 40 Sh	CODE 45 Sh	CODE 50 Sh	CODE 55 Sh	CODE 60 Sh	CODE 65 Sh	CODE 70 Sh	CODE 75 Sh	WEIGHT (gr)
SMALL	120	38,5	60	100	14	11	11	M-12	Ref Max Load (Kg)	*	136001 35	136002 45	*	136003 70	*	136004 95	*	136005 110	397
MEDIUM	183	50	75	140	30	13	22	M-16	Ref Max Load (Kg)	136021 95	*	136022 120	*	136023 220	*	136024 280	*	136025 400	857
LARGE	228	68	112	182	34	18	26	M-20	Ref Max Load (Kg)	136040 250	*	136041 350	*	136042 525	*	136043 800	*	136044 1080	2250
XL	330	112	190	270	22	22	22	M-24	Ref Max Load (Kg)	*	136061 950	*	136062 1400	*	136063 2200	*	136064 3000	*	9600

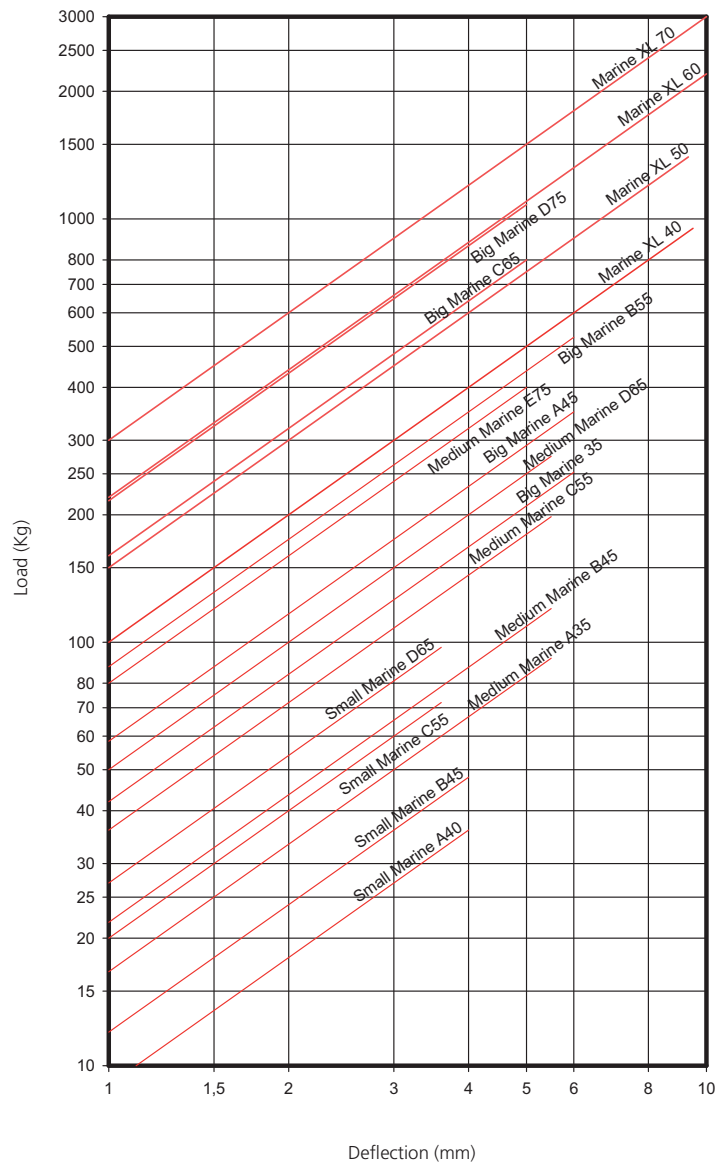
DYNAMIC MARINE MOUNT

AMC NATURAL FREQUENCIES
MECANOCAUCHO® DYNAMIC MARINE MOUNT



MARINE MOUNT DEFLECTION

AMC LOAD DEFLECTION GRAPHS
MECANOCAUCHO® MARINE TYPE MOUNT



MECHANICAL EQUIPMENT

Products

Industrial, Off Highway & Rail

Imported Industrial Products

Cone Mounts

CONES

DESCRIPTION

The AMC-Mecanocaucho® cones work the rubber in shear compression. They are composed of two parallel conical metal parts. They have two washers, one as a buffer and the other for centering.

TECHNICAL CHARACTERISTICS

The AMC-Mecanocaucho® Cone mounts are safe and stable elements. They do not allow the suspended elements to tilt, while being flexible enough to avoid the transmission of noise and vibration through the structure.

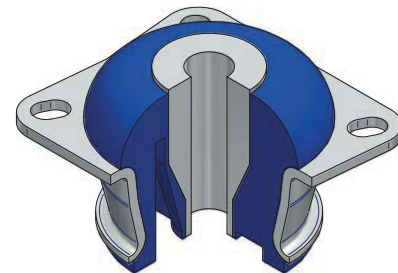
They are supplied with stop and centering washers. This renders deflection above the limits of the Mecanocaucho® Cones impossible, even at extreme loads.

The washers protect the natural rubber (which is highly elastic and highly resistant) from ozone and aging, as well as from metal knocks and dripping oil. The characteristic deflection curves of the AMC-Mecanocaucho® Cone mounts with centering washer are quite linear, increasing progressively as the load increases. Thanks to this they can safely dampen overloads of up to three times the maximum admissible load.

CONICAL MOUNTS WITH CUTOUTS

The cutouts on the rubber section offer different horizontal/vertical stiffness ratios. This feature is specially interesting for those applications where a lower stiffness is required in one of the axes.

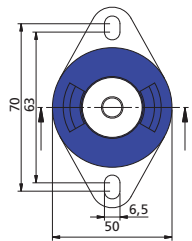
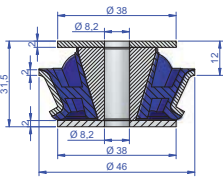
Our technical department can provide you the elastical constants par axis and can recommend you the optimal position of the cutouts.



TYPE CONE WITH CUTOUTS

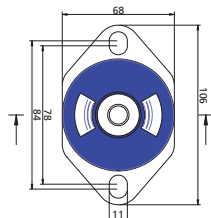
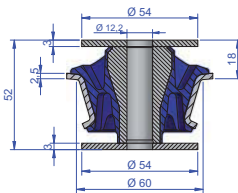
TYPE	AMC	CODE 40 Sh	CODE 45 Sh	CODE 50 Sh	CODE 55 Sh	CODE 60 Sh	CODE 65Sh	CODE 70 Sh	WEIGHT (gr.)
00	Ref Max. Load (Kg.)		137007 25			137008 50		137009 75	126
10	Ref Max. Load (Kg.)		137001 75			137002 140		137003 210	406
12	Ref Max. Load (Kg.)		137914 80		137916 120			137918 200	407
20	Ref Max. Load (Kg.)		137031 120			137034 200		137039 330	554
30	Ref Max. Load (Kg.)	137041 140		137043 190		137042 300			1167
35	Ref Max. Load (Kg.)		137065	137066 200		137067 320		137068 450	1328 760
120 NP	Ref Max. Load (Kg.)		137871 440		137872 720				6890

TYPE 00 CONE



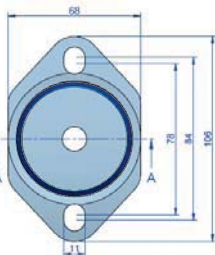
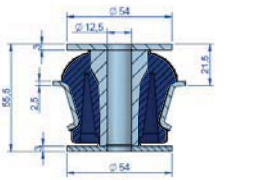
Top Washer Cone 00 code 610053
Lower Washer Cone 00 code 610053

TYPE 10 CONE



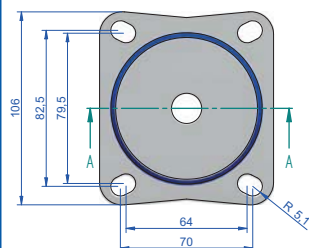
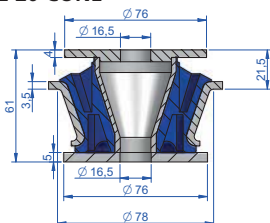
Top Washer Cone 20 code 611068
Lower Washer Cone 10 code 611068

TYPE 12 CONE

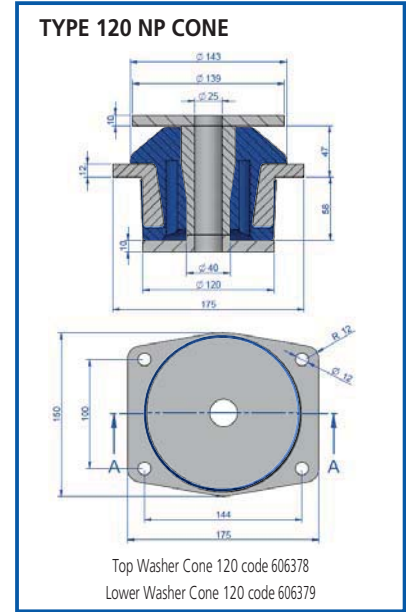
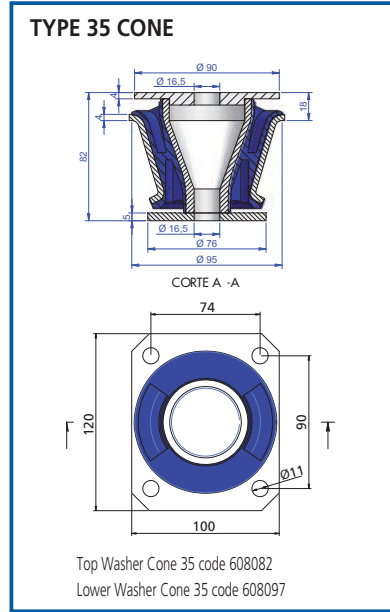
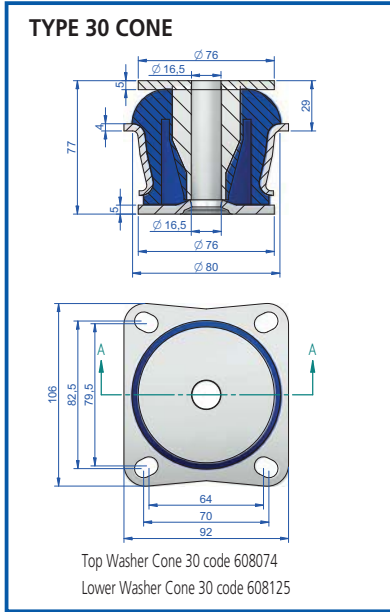


Top Washer Cone 12 code 611068
Lower Washer Cone 12code 611068

TYPE 20 CONE

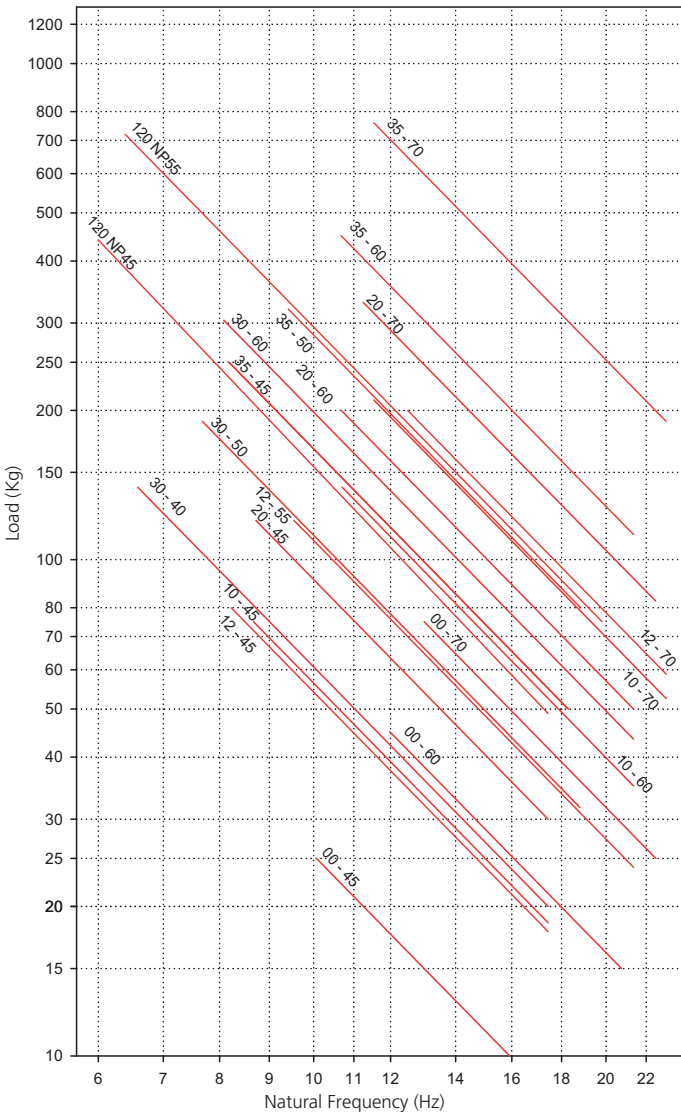


Top Washer Cone 20 code 610049
Lower Washer Cone 20 code 610050



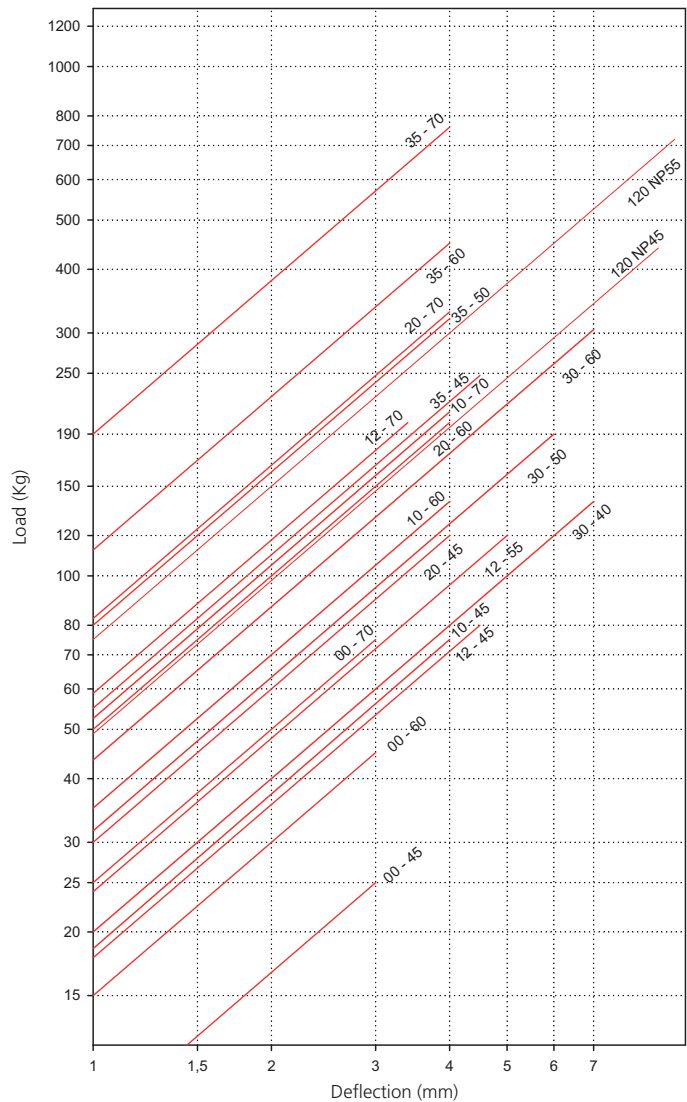
CONICAL MOUNTS WITH CUTOUTS DYNAMIC

AMC NATURAL FREQUENCIES
MECANOCAUCHO® CONE TYPE



DYNAMIC CONICAL MOUNTS WITH CUTOUTS DEFLECTION

AMC LOAD DEFLECTION GRAPHS
MECANOCAUCHO® CONE TYPE

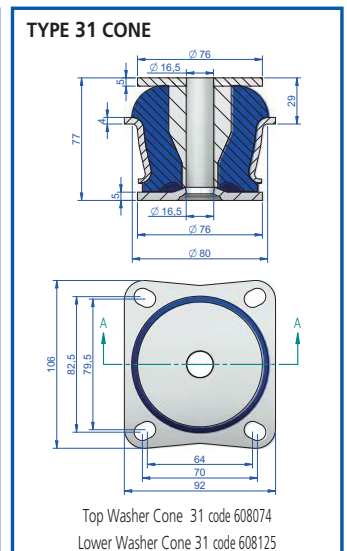
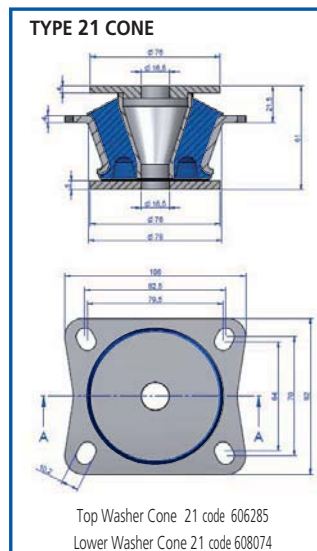
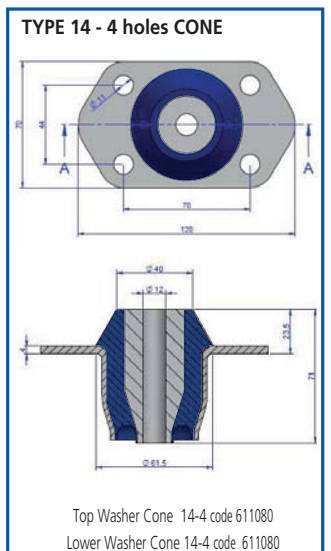
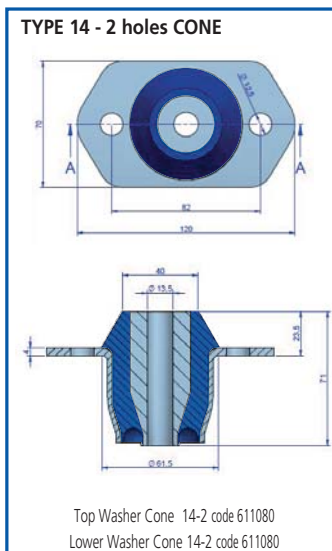
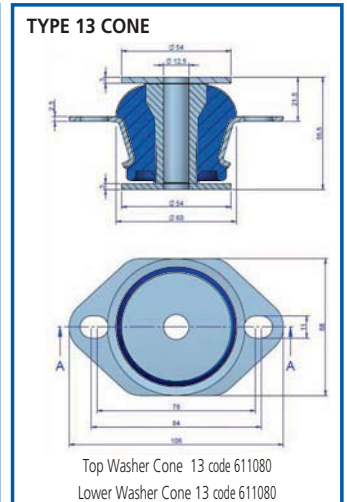
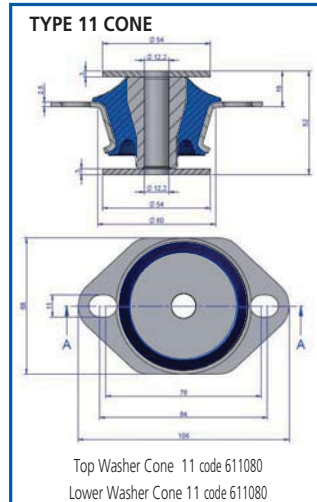
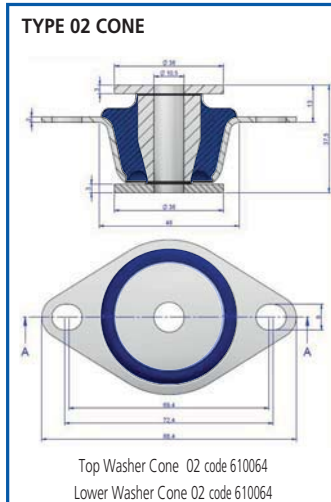
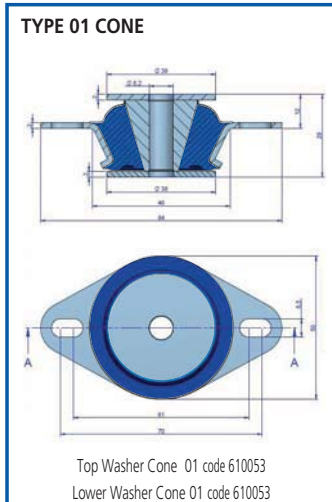


AMC® SOLID CONE TYPE

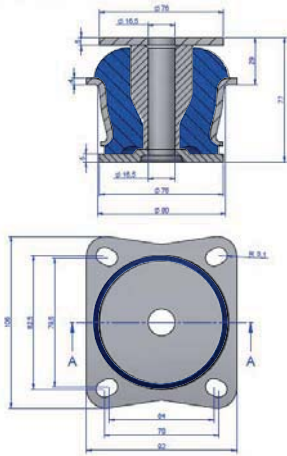
**Shore 75

* Upon request

TYPE	AMC	CODE 35 Sh	CODE 40 Sh	CODE 45 Sh	CODE 50 Sh	CODE 55 Sh	CODE 60 Sh	CODE 65 Sh	CODE 70 Sh	WEIGHT (gr.)
01	Ref Load (Kg)	*	*	137005 40	*	*	137006 70	*	137015 105	128
02	Ref Load (Kg)	*	*	137010 50	*	*	137011 90	*	*	132
11	Ref Load (Kg)	*	*	137021 100	*	*	137022 180	*	137023 270	409
13	Ref Load (Kg)	*	*	137921 120	*	137922 170	*	*	137023 270	450
14-2 hole	Ref Load (Kg)	*	*	137930 250	*	*	137931 450	*	137925 300	643
14-4 hole	Ref Load (Kg)	*	*	137935 250	*	*	137936 450	*	137937 690	662
21	Ref Load (Kg)	*	*	137071 180	*	*	137074 300	*	1379337 690	560
31	Ref Load (Kg)	*	*	*	137063 310	*	137061 500	*	137062 960	1188
33	Ref Load (Kg)	*	*	137075 300	*	*	137077 500	*	*	1462
36	Ref Load (Kg)	*	*	137171 400	*	*	137172 700	*	137173 1100	1410
40	Ref Load (Kg)	*	*	137081 420	*	*	137082 690	*	137083 1080	1216
60	Ref Load (Kg)	*	*	137091 900	*	*	137092 1250	*	137093	1821
65	Ref Load (Kg)	*	*	*	137176 500	*	*	137177 1100	137178** 1560	2965
70	Ref Load (Kg)	*	*	137101 1000	137106	137107	137102 2100	*	137103 2500	3450
121 NG	Ref Load (Kg)	*	*	*	*	137830 1750	*	137833 2000	*	7840
121 NP	Ref Load (Kg)	*	*	*	*	137829 1200	*	*	*	6940

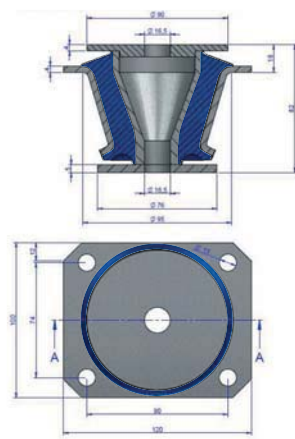


TYPE 33 CONE



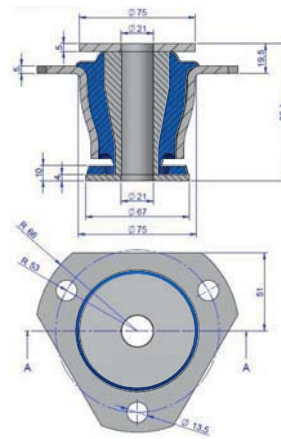
Top Washer Cone code 608074
Lower Washer Cone 33 code 608125

TYPE 36 CONE



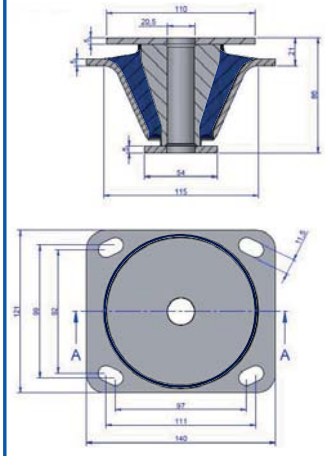
Top Washer Cone 36 code 608082
Lower Washer Cone 36 code 608074

TYPE 40 CONE



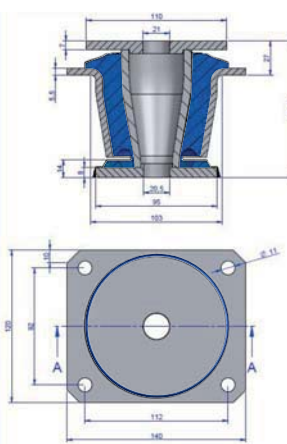
Top Washer Cone 36 code 610027
Lower Washer Cone 36 code 608069

TYPE 60 CONE



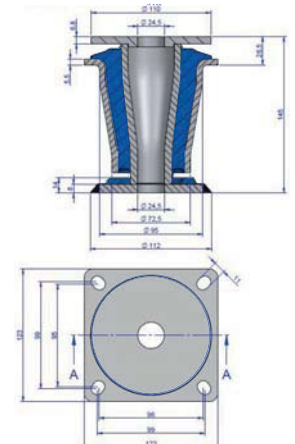
Top Washer Cone 60 code 610032
Lower Washer Cone 60 code 610033

TYPE 65 CONE



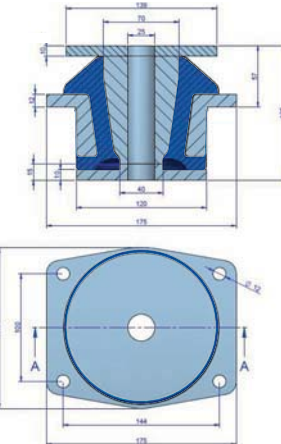
Top Washer Cone 65 code 608144
Lower Washer Cone 65 code 608072

TYPE 70 CONE



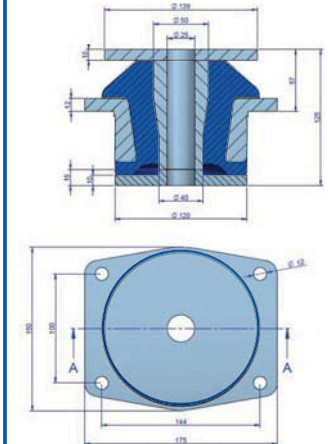
Top Washer Cone 70 code 608033
Lower Washer Cone 70 code 606145

TYPE 121 NG CONE

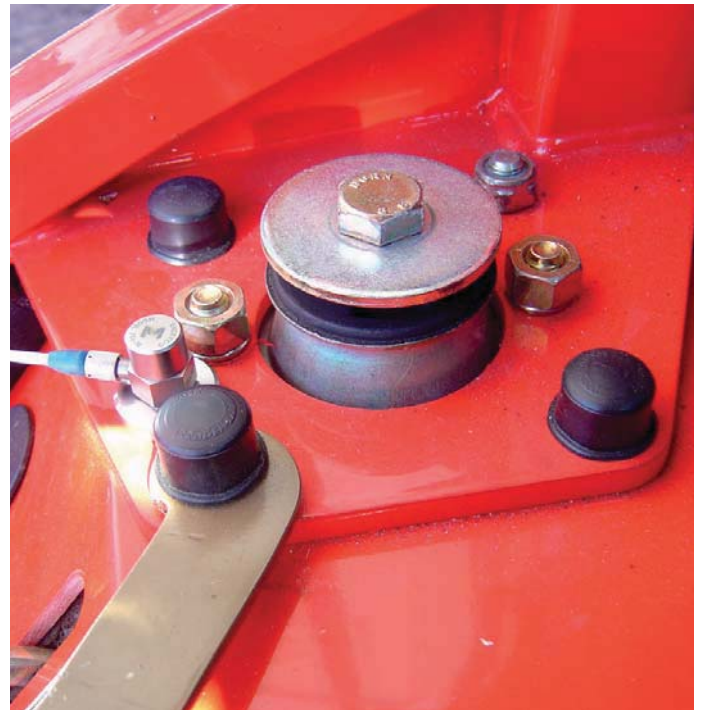
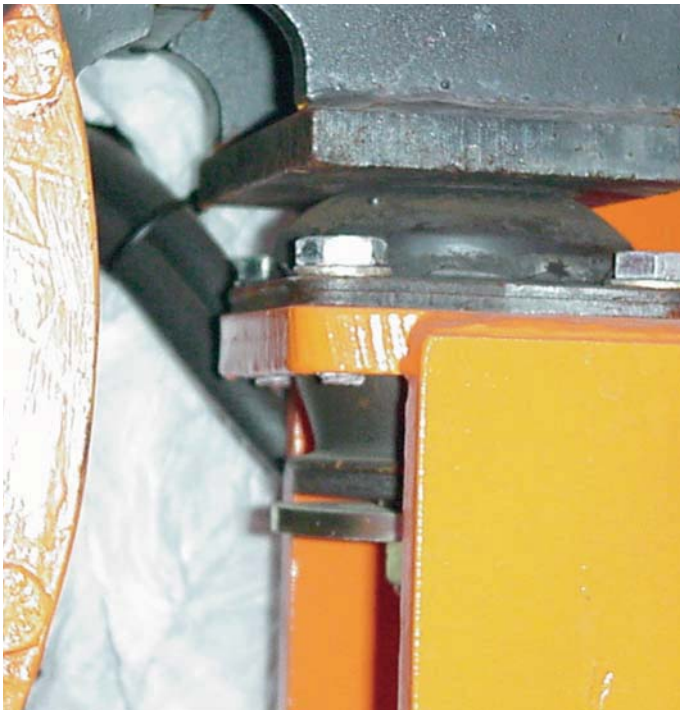


Top Washer Cone 121 code 606378
Lower Washer Cone 121 code 606379

TYPE 121 NP CONE

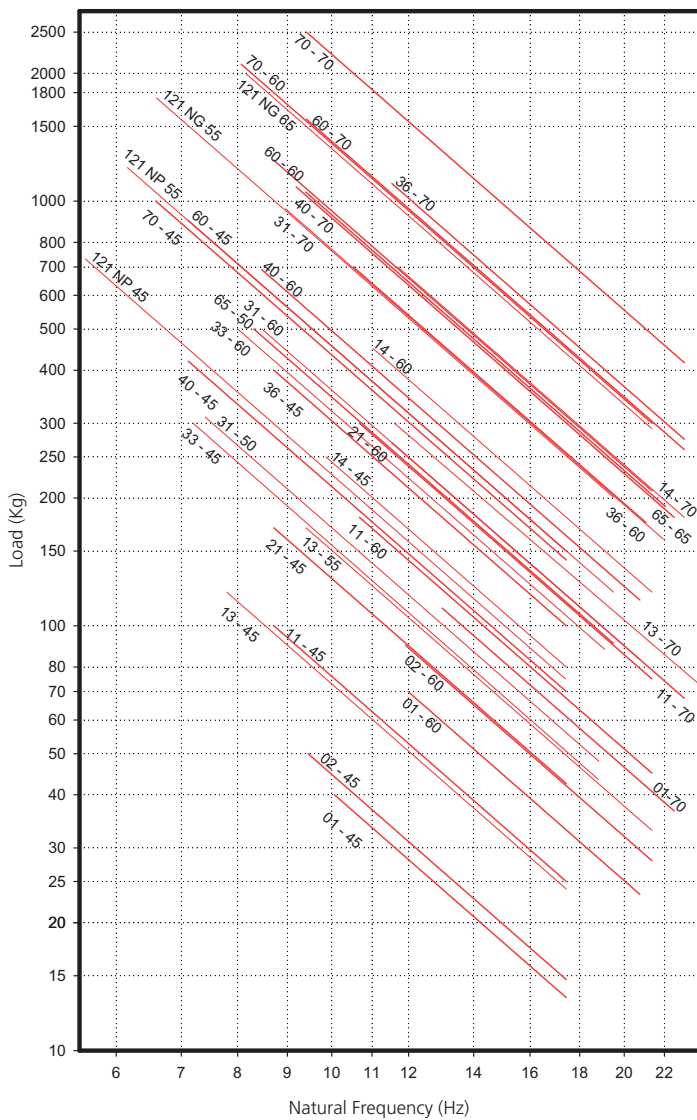


Top Washer Cone 121 code 606378
Lower Washer Cone 121 code 606379



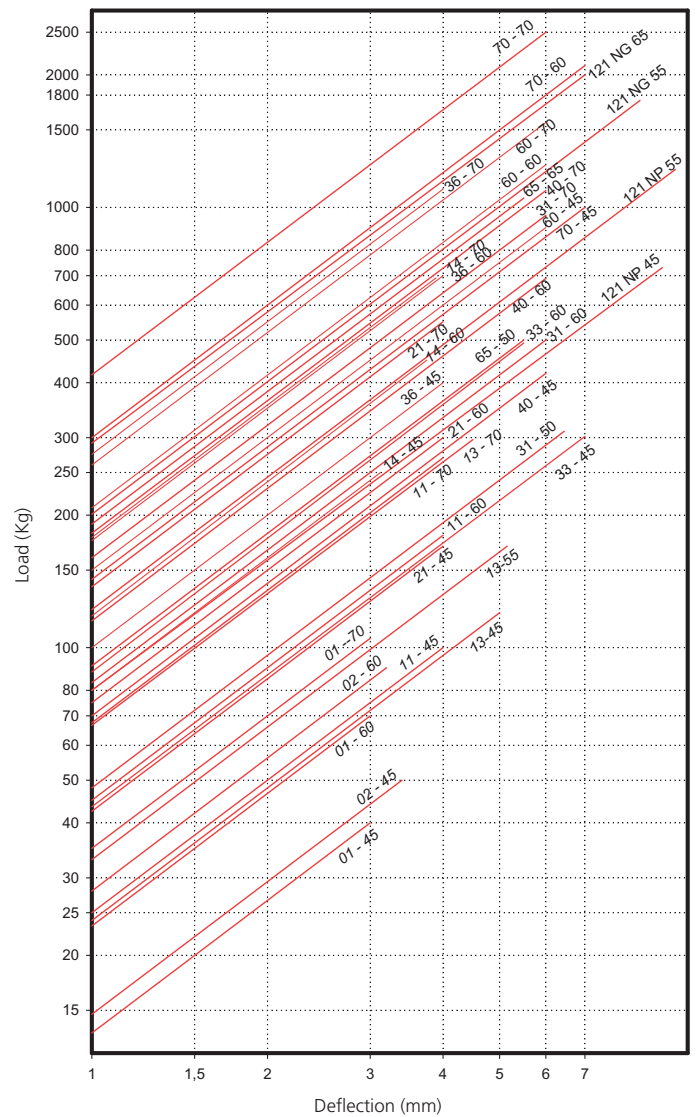
DYNAMIC CONE

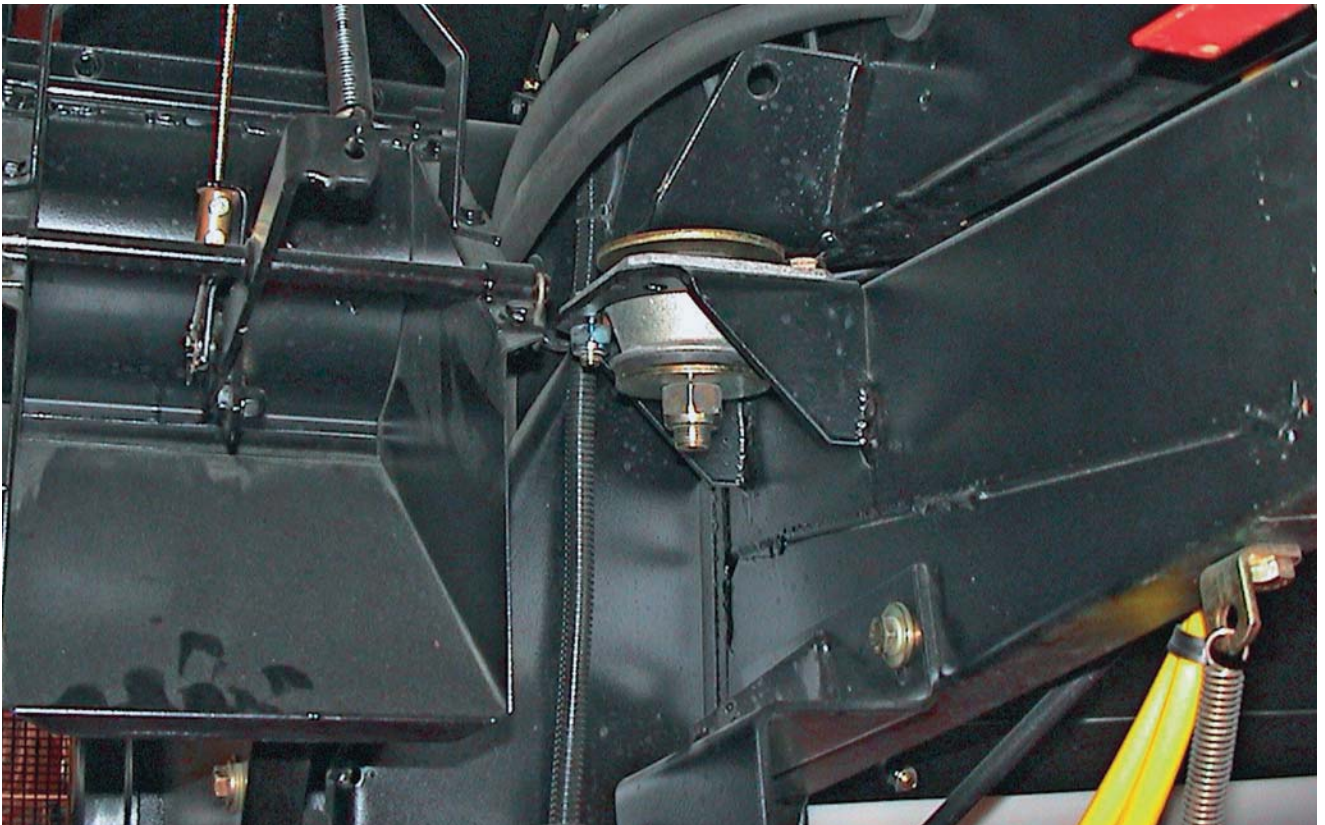
AMC NATURAL FREQUENCIES
MECANOCAUCHO® CONE TYPE



DEFLECTION CONE

AMC LOAD DEFLECTION GRAPHS
MECANOCAUCHO® CONE TYPE





MECHANICAL EQUIPMENT

Products

Industrial, Off Highway & Rail

Imported Industrial Products

Cabine Mounts



CABINE MOUNTS

DESCRIPTION

The AMC-MECANOCAUCHO® cabin mount is composed of two main metal parts. Both metal parts are bonded to a high resilient rubber for optimum vibration isolation.

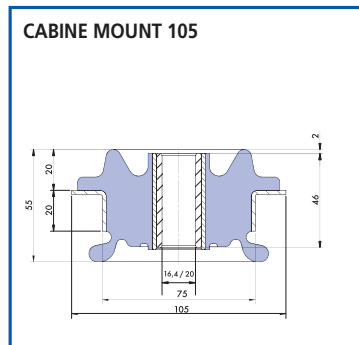
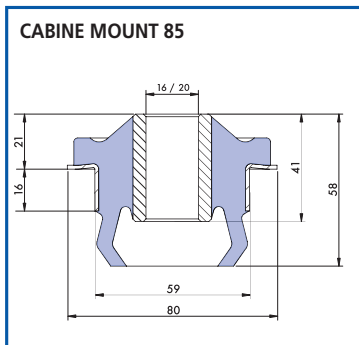
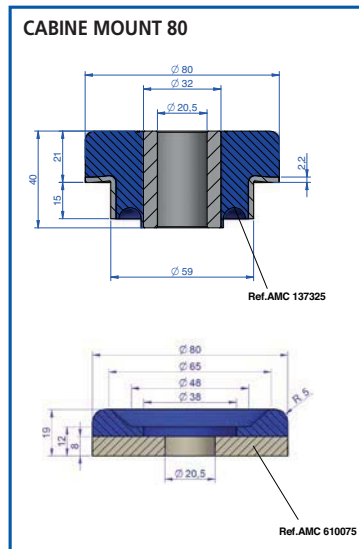
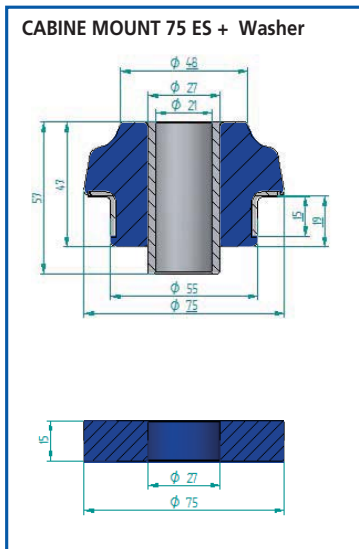
TECHNICAL CHARACTERISTICS

- This mount incorporates two bump shaped profiles in order to absorb dynamic loads or shocks. This feature is specially interesting for restricting the motion of the cabin under transient shocks.
- The metal parts are corrosion protected to cope with arduous environments on land or marine applications. RoHs compliant.
- The AMC-Mecanocaucho® cabin mount can be manufactured in other different rubber compounds in order to be suitable for different weight of cabins.
- Our technical department can give the correct recommendation in order to overpass ROPS tests on construction equipment machinery.

APPLICATIONS

For the effective isolation of vibration and noise on cabins for the following purposes:

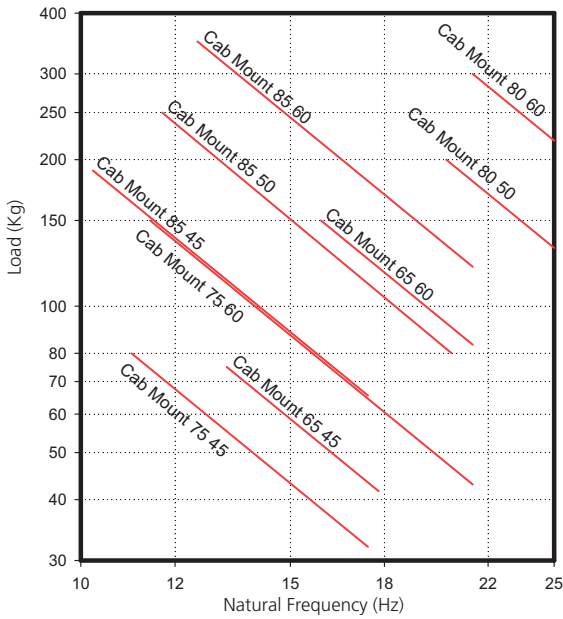
- Agricultural Tractors.
- Construction equipment machinery
- Off road vehicles.



TYPE	CODE	CODE	CODE	WEIGHT	
		45 shore	50 shore		60 shore
		Max. Load (Kg.)	Max. Load (Kg.)	Max. Load (Kg.)	(GR.)
Cabine Mount 75	Ø16	137371		137372	328
	Ø20	137373		137374	328
		80		150	
Cabine Mount 80	Ø16		137353	137354	616
	Ø20		137351	137352	616
			200	300	
Cabine Mount 85	Ø16	137322		137323	300
	Ø20	137313		137311	300
		75		150	
Cabine Mount 105	Ø16	137301	137318	137315	600
	Ø20	137302	137320	137319	600
		190	250	350	

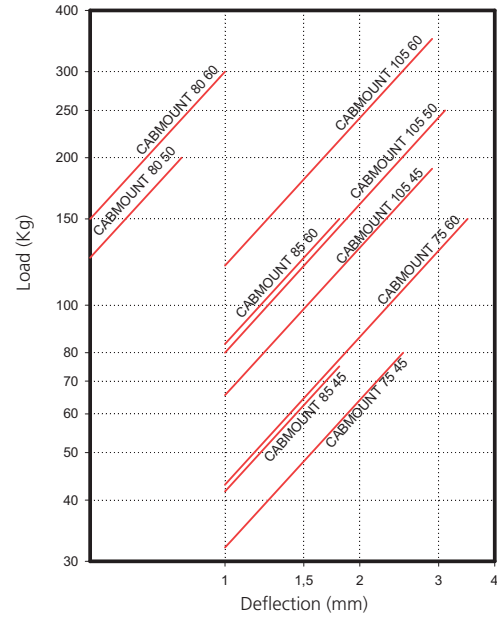
DYNAMIC CABINE MOUNT

AMC NATURAL FREQUENCIES
MECANOCAUCHO® DYNAMIC CABINE MOUNT

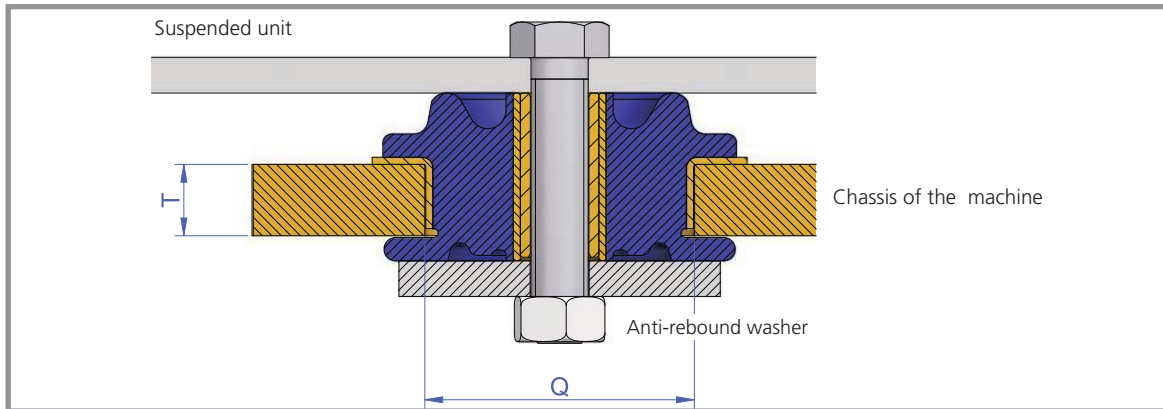


CABINE MOUNT DEFLECTION

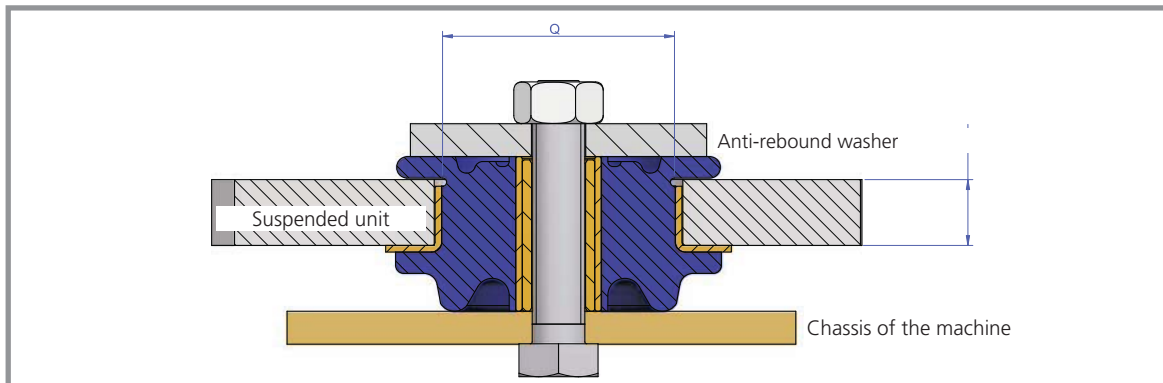
AMC LOAD DEFLECTION GRAPHS
MECANOCAUCHO® CABINE MOUNT TYPE



- Assembly 1



- Assembly 2



TYPE	Q	T
Cabine Mount 75	60	16
Cabine Mount 80	55,5	16
Cabine Mount 85	60	16
Cabine Mount 105	75	20

MECHANICAL EQUIPMENT

Products

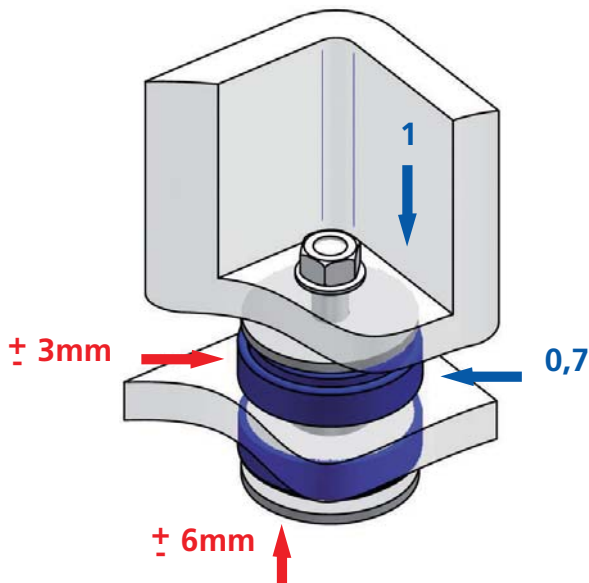
Industrial, Off Highway & Rail

Imported Industrial Products

CB Mounts



Blue colour: Stiffness ratios per axe
Red colour: Maximum elastical course per axe



CB

DESCRIPTION

The **AMC-MECANOCAUCHO®** type CB mounts are installed in pairs. Installation is simplified as both mounts fixed with one through bolt and a washers at each end.

The mount is provided with a built in wear plate that prevents the elastomeric element from coming in contact with sharp edges of support frames or structures that may cause friction in traditionally used semi bonded mounts. Therefore with these mounts there is no need to machine radii or chamfer holes.

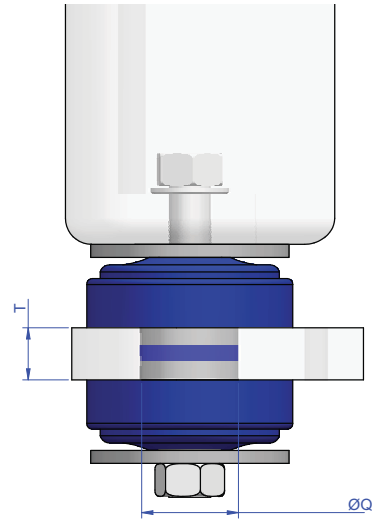
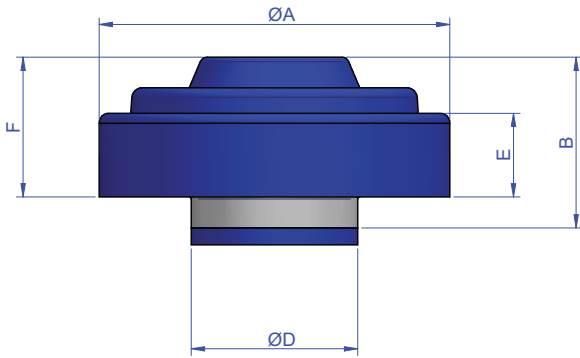
The specific design of the mounts permits high dynamic loads whilst limiting the movement due to the multiple axial snubbing design.

TECHNICAL CHARACTERISTICS

- The AMC-MECANOCAUCHO® Type CB is radially 30% softer than axially. This feature is specially interesting for those machines or equipments where radial axis vibration isolation is important.
- The mount is provided with a built in snubbing system that allows the following elastical courses:
 - Vertical: +/- 6 mm
 - Horizontal: +/- 3mm
- The mount can be supplied in two different sizes and in different hardness compounds to accommodate applications from 30 to 550 Kg per mount.
- Metal parts are embedded in rubber in order to prevent corrosion.

APPLICATIONS:

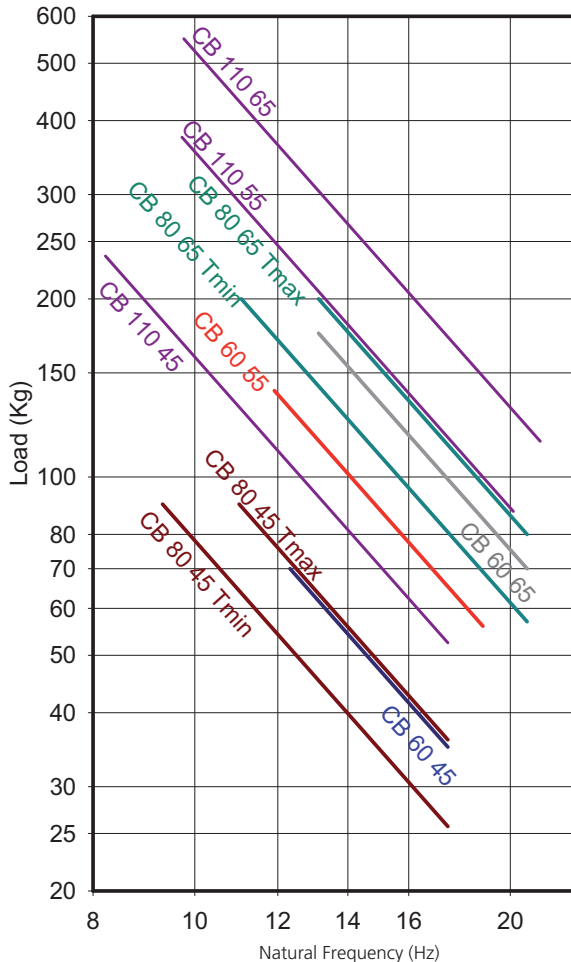
- Agricultural or construction equipment cabins, engines, radiators, transmission ,battery boxes.
- Marine equipment
- Mobile Generators or compressors.
- Chassis frames for Military, Bus, Truck, Motorhome and Emergency vehicles.



TYPE	A	B	C	D	E	F	T Max.	T Min.	ø	AMC	CODE 45 Sh	CODE 55 Sh	CODE 65 Sh	WEIGHT(gr)	WASHER	CODE
CB 60	66	34,5	16,5	39,5	16	28	20	20	40	Ref	156011	156013	156014	140	CB60	606130
										Max Load (Kg.)	70	120	170			
CB 80	80	37	16,5	38,2	18,5	32,5	20	15	38	Ref	156001	156002	156003	242	CB80	608074
										Max Load (Kg.)	90	140	200			
CB 110	109	47	22,5	56,5	27,5	40	25	25	57	Ref	156021	156022	156023	630	CB110	610032
										Max Load (Kg.)	235	375	550			

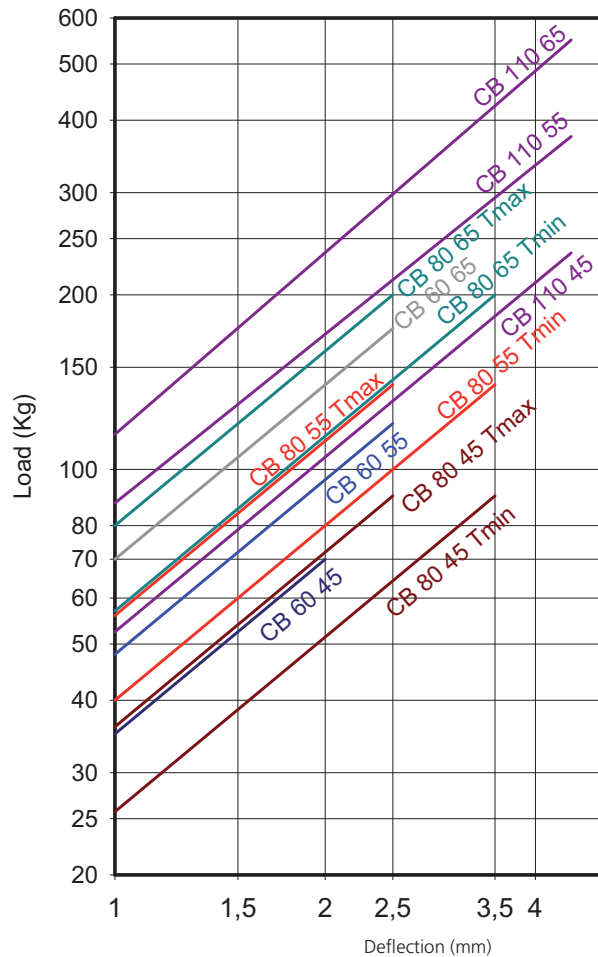
DYNAMIC CB

AMC NATURAL FREQUENCIES MECANOCAUCHO® DYNAMIC TYPE CB



CB DEFLECTION

AMC LOAD DEFLECTION GRAPHS MECANOCAUCHO® TYPE CB



MECHANICAL EQUIPMENT

Products

Industrial, Off Highway & Rail

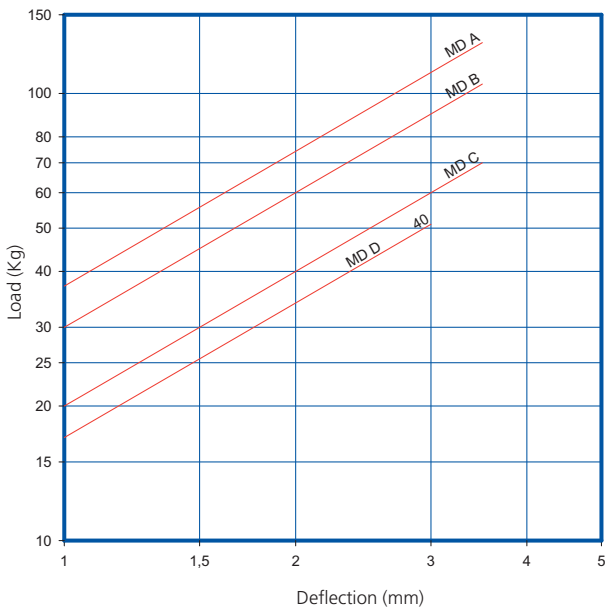
Imported Industrial Products

MD Mounts

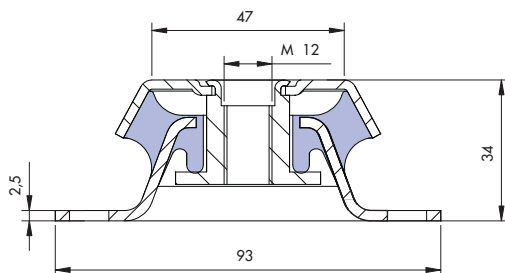


MD DEFLECTION

LOAD DEFLECTION GRAPHS
TYPE MD AMC-MECANOCAUCHO®



TYPE	CODE	WEIGHT
	Load Kg	(g)
A	135210	238
	130	
B	135212	238
	105	
C	135213	238
	70	
D	135219	238
	50	



MD

DESCRIPTION

The AMC-Mecanocaucho MD-type mounts have similar architecture to the BSB and BRB. The advantage of this mount is that it is a high-damping elastic compound.

Its special mix affords it a high degree of antivibration isolation and offers great stability to suspended equipment.

TECHNICAL CHARACTERISTICS

- Metal hood that protects the part from possible oil splashes.
- It has an electrolytic coating that protects the part from corrosion.
- They have an interlocking metal component that provides a fail-safe protection for mobile applications. This device limits the ascending vertical movement when the mounting is submitted to shocks at traction.

APPLICATIONS

This mount has been specially designed to insulate engines that produce high-amplitude vibrations.

Engines from 1 to 3 cylinders, Motor Pumps, Gen Sets, Compressors, Ventilators...

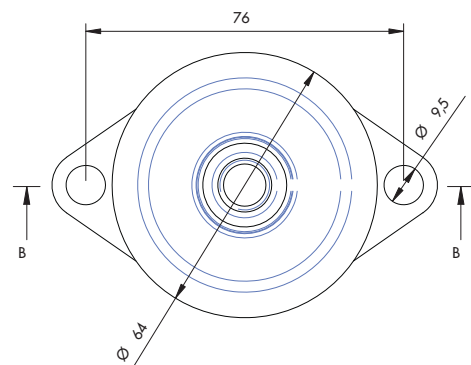
WHEN IS IT USED?

The MD-type AMC-Mecanocaucho® works as an antivibration mount but also as an engine stabiliser. This mount is used when conventional rubber metal mounts do not offer sufficient stability to the suspended equipment.

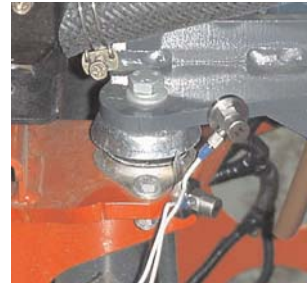
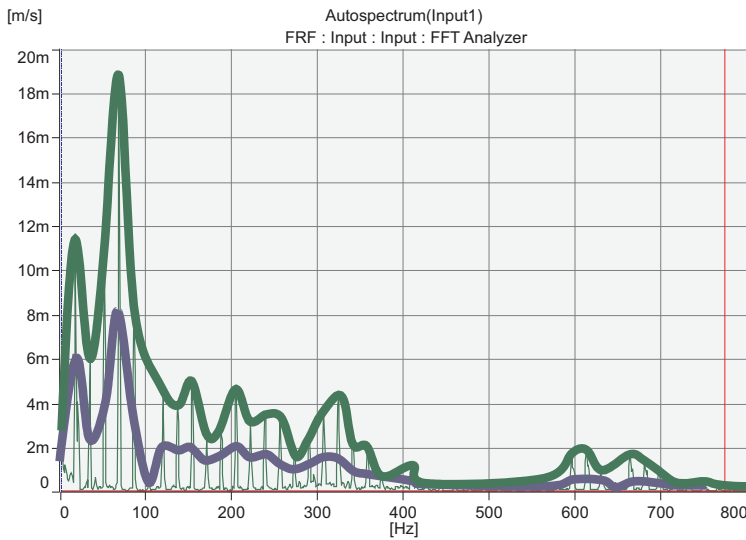
The MD is installed in small engines of 1, 2 and 3 cylinders which are particularly unstable.

These mounts are suitable for the suspension of machines which are started and stopped a lot and where the passage of resonance needs a high degree of damping or work in conditions which are close to the frequency of resonance of the system.

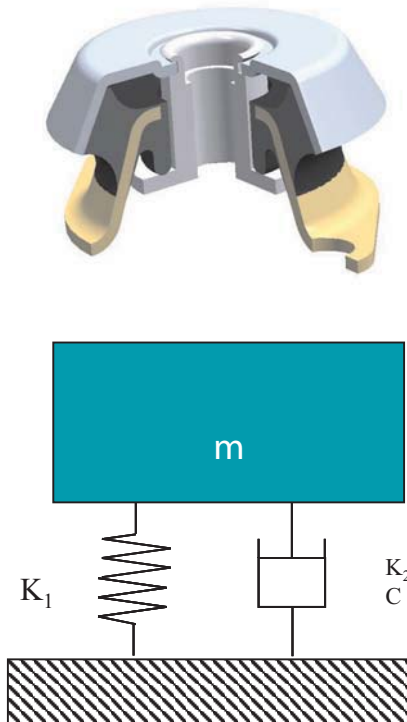
Diesel engines require MD mounts, particularly when they have few large-diameter cylinders, which makes the engine create high-amplitude vibrations, therefore requiring extra damping to correct these high amplitudes.



Vibration level measured in the engine



— Natural rubber mount
— MD mount



K_1 = Main stiffness - K_2 = Secondary stiffness
 C = Damping coefficient - m = Mass



It is a very suitable mount for engines where it is not physically possible to install the antivibration mounts at the same height as the crankshaft.

MECHANICAL EQUIPMENT

Products

Industrial, Off Highway & Rail

Imported Industrial Products

SCH Mounts



SCH

DESCRIPTION

The AMC-Mecanocaucho® SCH type mounts are made of two parts of rubber, one of which bears an inside metal bushing which acts as a guide through the machine anchoring screw.

It is installed pre-compressed on the actual machine frame, whose thickness "E" determines the degree of precompression

TECHNICAL CHARACTERISTICS

This antivibration mount is ideal for applications of major dynamic loads where movement control is necessary, such as in the cabins of all types of mobile vehicles. It also offers optimal stability, as well as good attenuation of impacts and vibrations.

APPLICATIONS

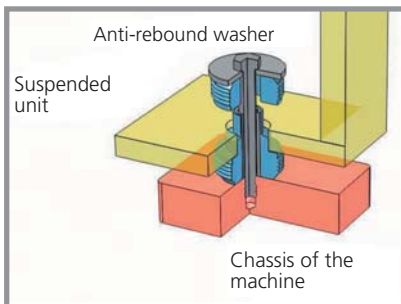
-Vehicle cabins./-Public works and agricultural vehicles, etc.

ASSEMBLY INSTRUCTIONS

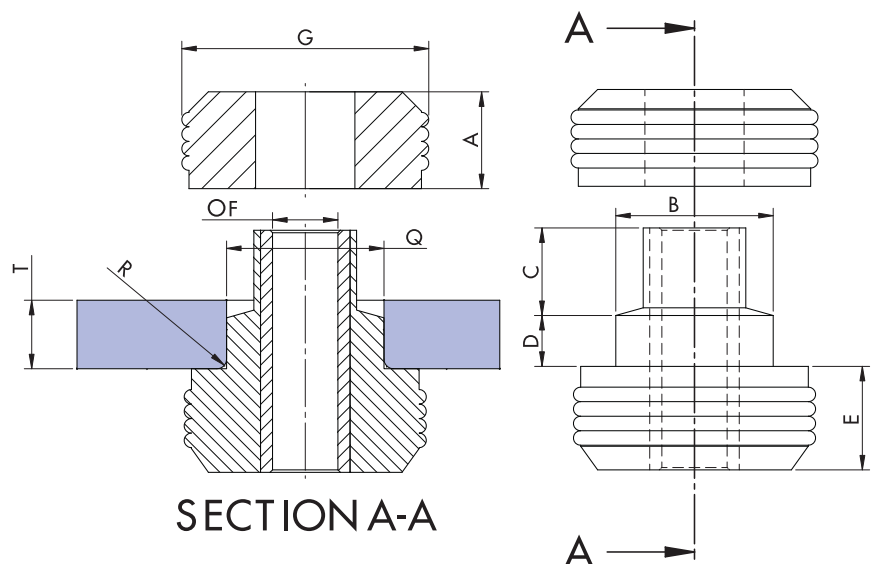
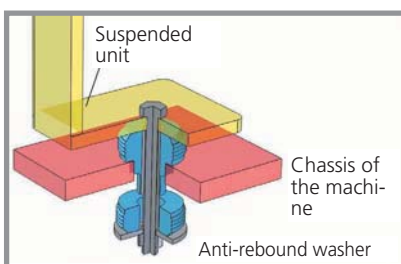
The SCH mounts should be assembled according to the following installation instructions. There are two possible configurations, see assembly 1 and assembly 2, for which the recommendations given in the following chart must be observed. They can be installed in plates of different thicknesses according to the Tmax and Tmin values given in the table at the bottom. The load vs. deformation curves will vary according to the thickness of the plate on which the mount is to be installed.



- Assembly 1



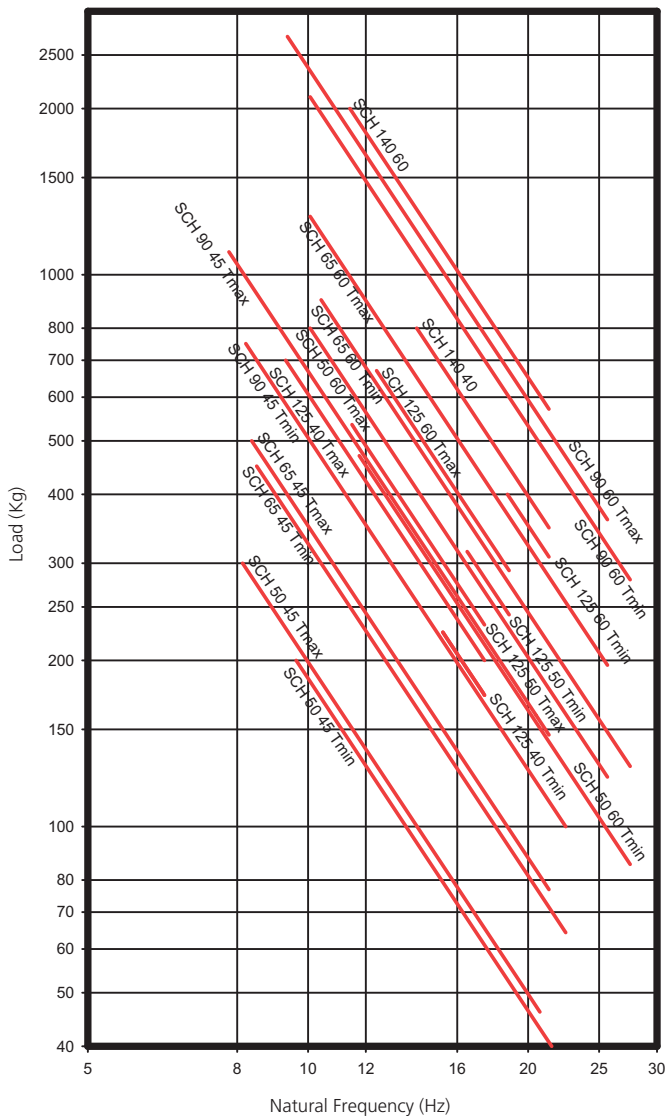
- Assembly 2



TYPE	A	B	C	D	E	F	G	Q	T (Máx.)	T (Mín.)	WEIGHT (gr)	R	CODE	Ref	Max. Load	WASHERS	Øext	Øint	THICKNESS
SCH 50	20	31,5	18,5	11	20,5	13,5	49	30,8	14	12,5	153	1,5	138501	45 sh	80	608099	54	13,5	4
													138504	60 sh	130	608099	54	13,5	4
SCH 65	23	39,5	24	15	23	17	63,5	38,5	22	19	350	2,5	138502	45 sh	120	608100	67	16,5	5
													138505	60 sh	260	608100	67	16,5	5
SCH 90	25	58	31	17	25	23	88	54,5	29	25	675	3	138503	45 sh	260	608101	96	22	6
													138506	60 sh	450	608101	96	22	6
SCH 125	32	65	32,5	22	32	27	125,5	63,5	32	25	1440	3	138514	50 sh	650	610123	125	25	8
													138515	60 sh	800	610123	125	25	8
SCH 140	35	70	31	13	35	31	140	70	20	20	1900	4	138508	45 sh	700	608115	145	30	10
													138510	60 sh	2000	608115	145	30	10

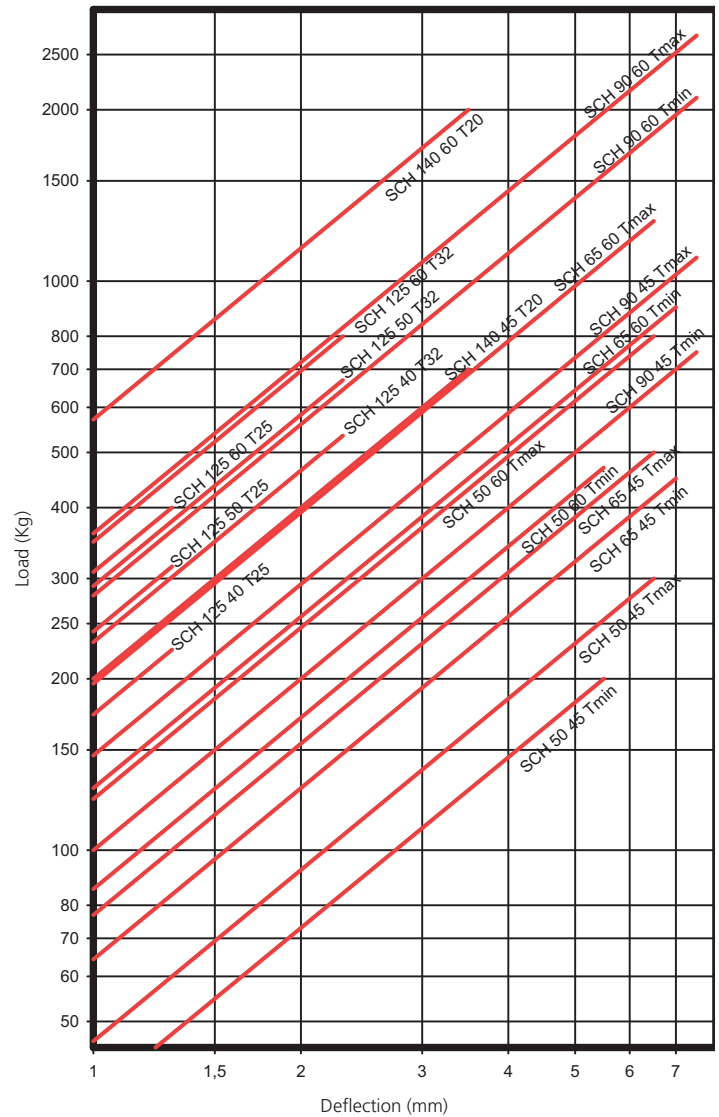
DYNAMIC SCH

AMC NATURAL FREQUENCIES
MECANOCAUCHO® SCH TYPE



SCH DEFLECTION

AMC LOAD DEFLECTION GRAPHS
MECANOCAUCHO® SCH TYPE



MECHANICAL EQUIPMENT

Products

Industrial, Off Highway & Rail

Imported Industrial Products

Eccentric Mounts



ECCENTRIC BUSHINGS

DESCRIPTION

In eccentric bushing the center points of the inner and outer cylinders are not the same. As a result it is more flexible in the direction of the main load and it keeps the same control in the other direction.

The eccentric bushing is available in two hardnesses, 45 and 60 sh.

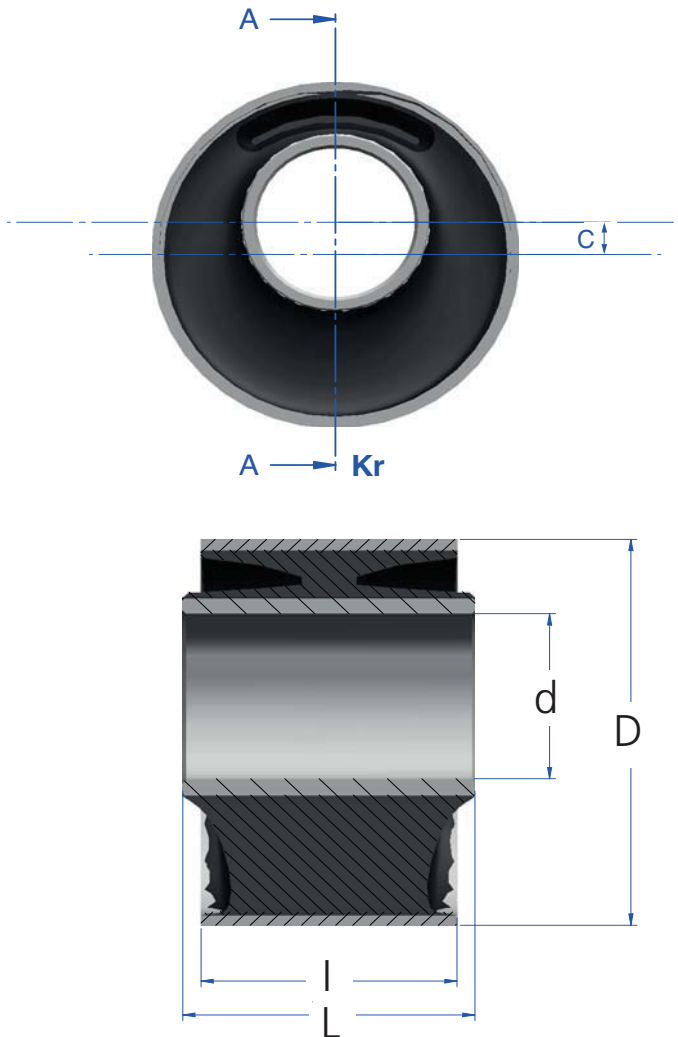
TECHNICAL FEATURES

- Optimal vibration damping and isolation.
- Fit to use for robust and safe constructions.
- Simple installation and application.
- Maximum load of bushing 45SH is about 300Kg.
- Maximum load of bushing 60SH is about 460Kg.

APPLICATION

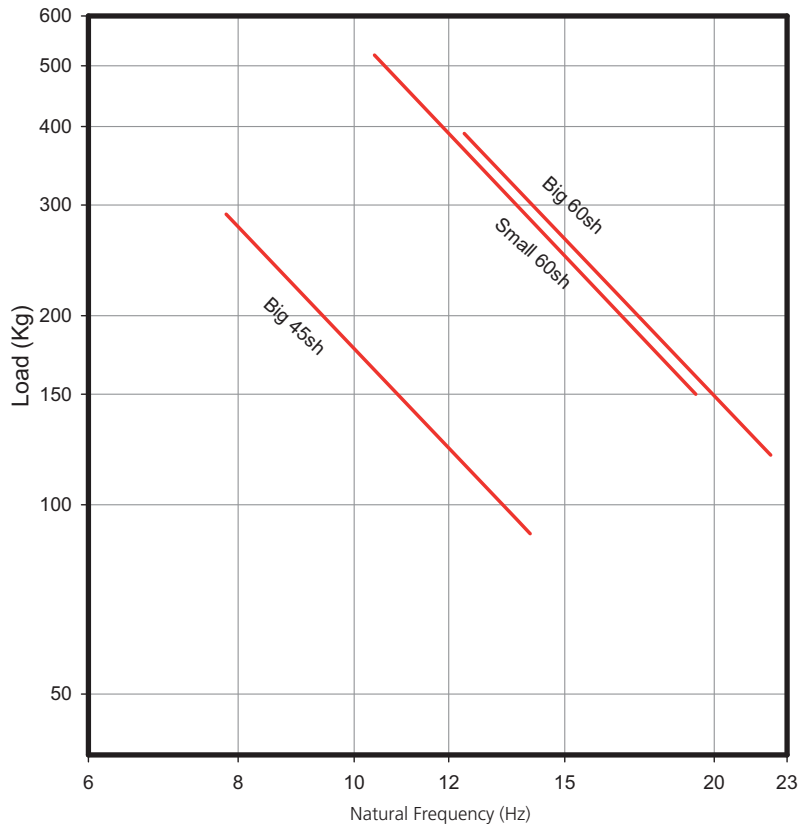
The AMC MECANOCAUCHO® eccentric bushing is best suited to the following situations and applications :

- Tilting cab suspension.
- Suspension arms.

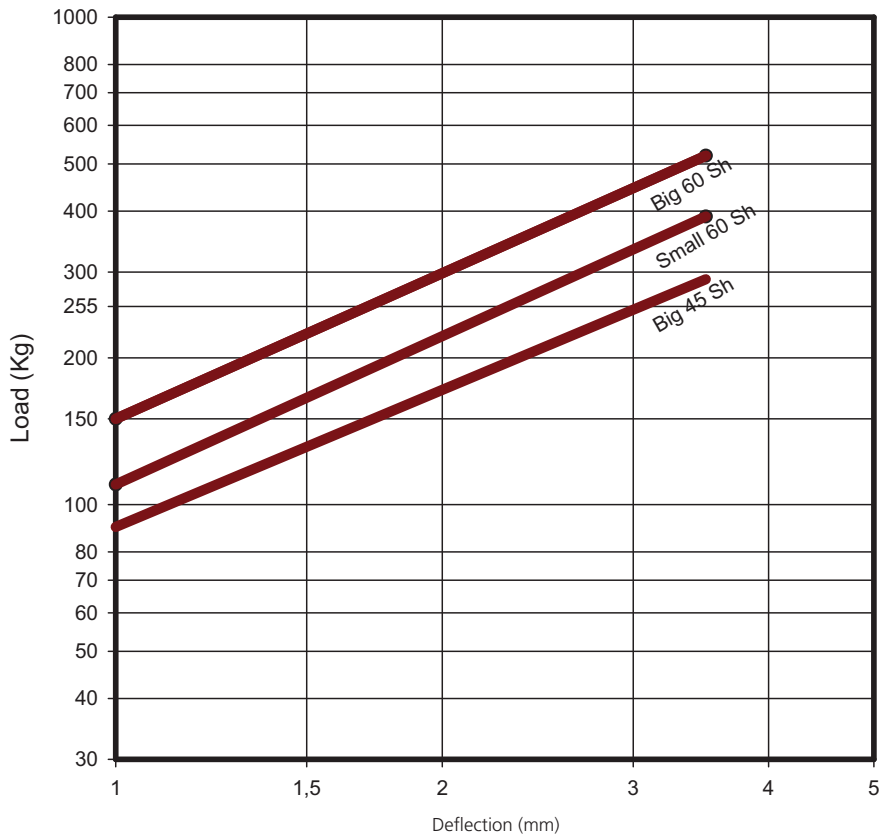


TYPE	d	D	I	L	C	AMC	45 Sh	60 Sh
Small	24	75,3	50,8	70	10,5	Ref Max. Load (Kg)		154158 290
Large	43,7	101,6	63,5	72,4	9,5	Ref Max. Load (Kg)	154154 390	154155 510

AMC NATURAL FREQUENCIES ECCENTRIC BUSHING



AMC LOAD DEFLECTION GRAPHS ECCENTRIC BUSHING



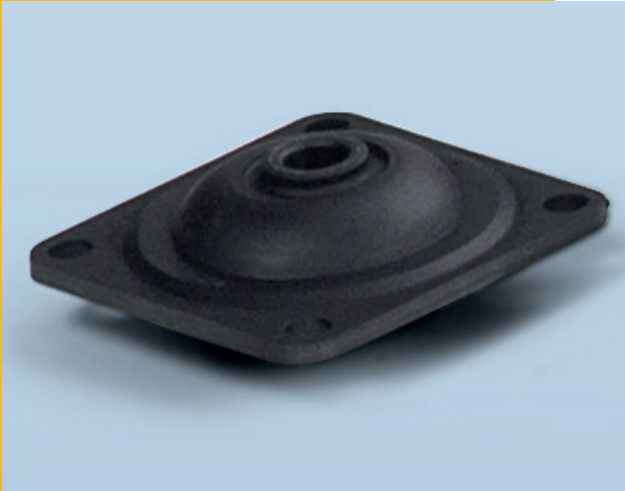
MECHANICAL EQUIPMENT

Products

Industrial, Off Highway & Rail

Imported Industrial Products

NP Mounts



NP MOUNTS

DESCRIPTION

The AMC-MECANOCAUCHO® NP mounts are composed of a metallic flange and a bush that are bonded to a high resilient rubber compound.

The AMC-MECANOCAUCHO® NP mounts can be fitted with overload/rebound washers. This allows fail-safe installations. For this purpose we recommend using washer Ref. AMC: 608074 that has the following dimensions :76x16.5x5mm.

The flange comes with four fixing holes and the inner bush allows upto 120 N/mm tightening torque.

TECHNICAL CHARACTERISTICS

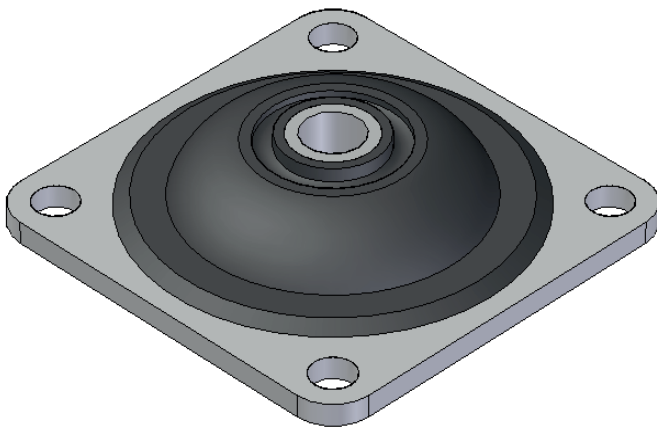
AMC-MECANOCAUCHO® NP mounts can be applied in mobile applications when installed with overload/rebound washers.

AMC-MECANOCAUCHO® NP mounts are available in several rubber hardnesses to suit the p g q load range of the application.

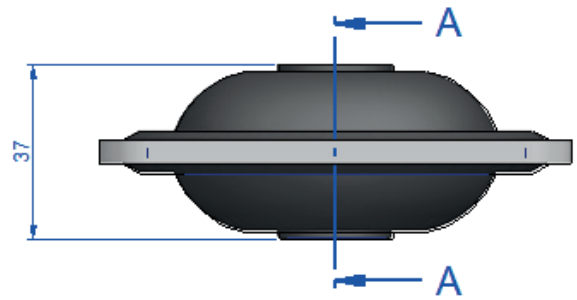
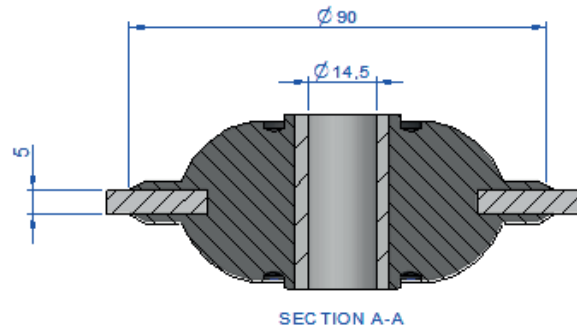
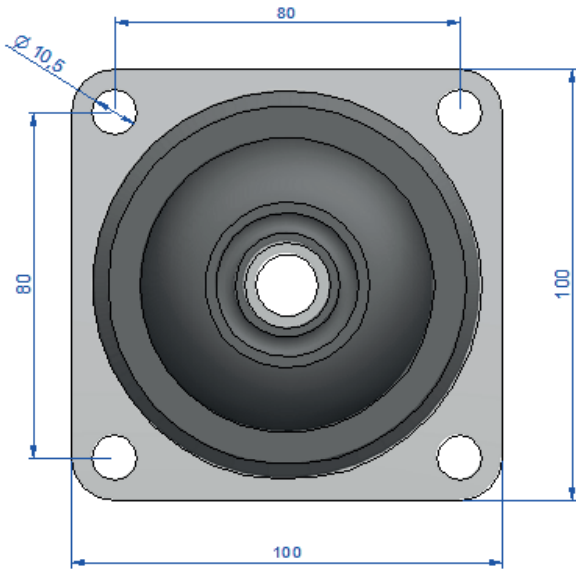
APPLICATIONS

AMC-MECANOCAUCHO® NP mounts are used for the effective noise and vibration isolation in the following applications:

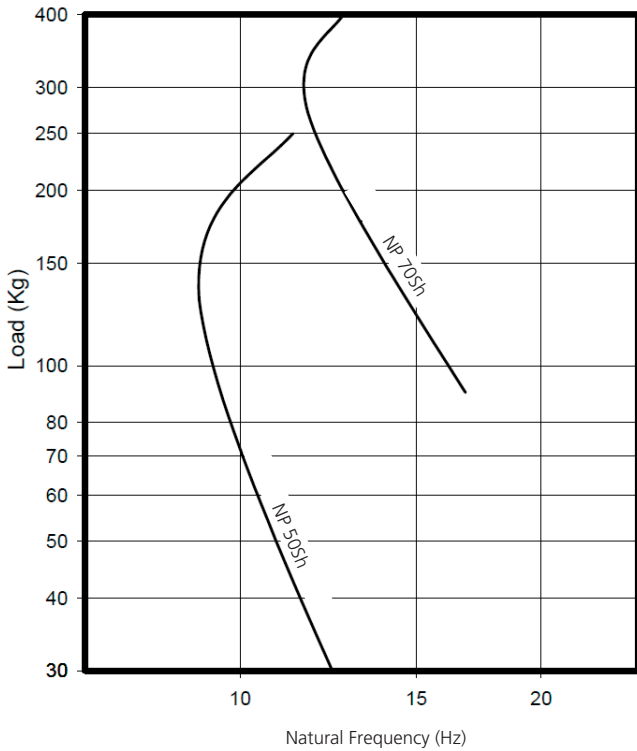
- Agricultural equipment
- Construction equipment machinery.
- Cranes.
- Forklift trucks.
- Multipurpose vehicles.



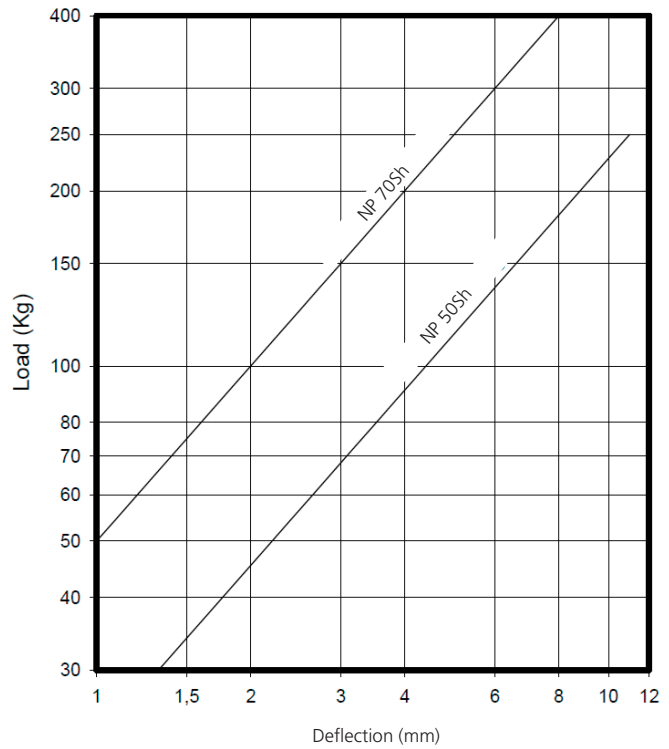
	Max. Load (Kg)	CODE
50 Sh	250	138202
70 Sh	400	138203



Natural Frequency
MECANOCAUCHO® Type NP



LOAD DEFLECTION CURVE
MECANOCAUCHO® Type NP



MECHANICAL EQUIPMENT

Products

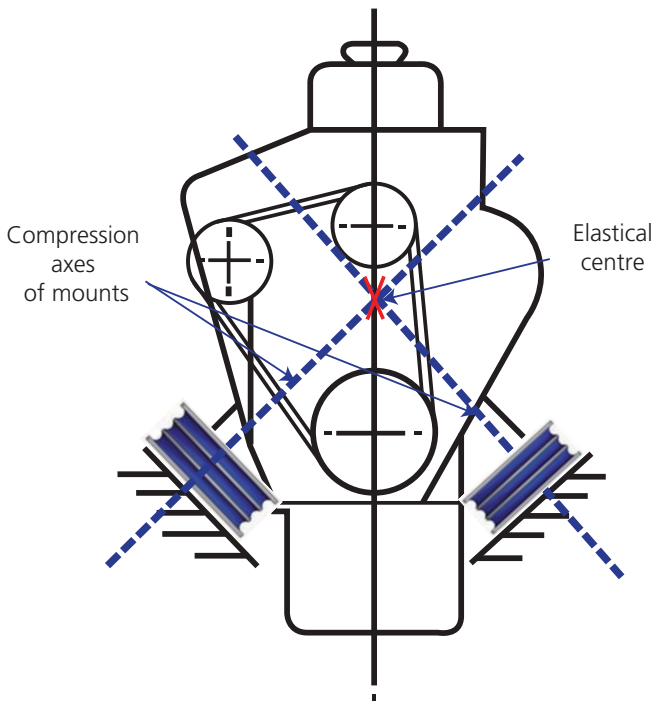
Industrial, Off Highway & Rail

Imported Industrial Products

SH Mounts



“Vee” inclined installation configuration



AMC-MECANOCAUCHO® technical department can calculate a precise angle configuration in order to achieve an optimum compromise between isolation and stability of the suspended equipment

SH

DESCRIPTION

Each mount consists of two heavy duty square outer plates with corner hole fixings fully bonded to circular profiled rubber layers separated by interleaf plates.

The AMC-MECANOCAUCHO® type SH mounts provide high static and shock load capacities in compression with a minimum deflection, maintaining a low shear stiffness rate.

TECHNICAL CHARACTERISTICS

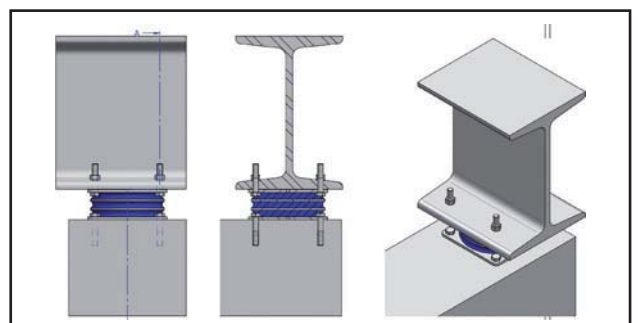
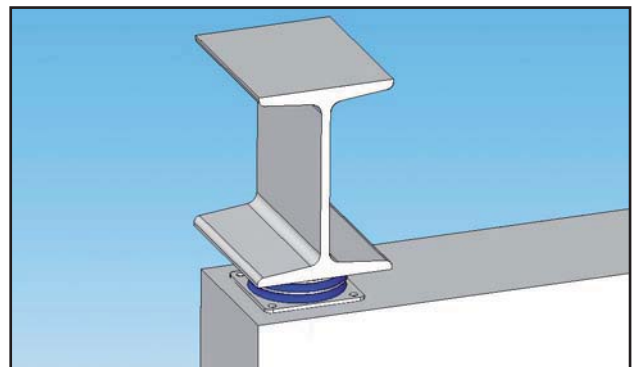
The AMC-MECANOCAUCHO® type SH mounts are designed for long lasting heavy duty applications.

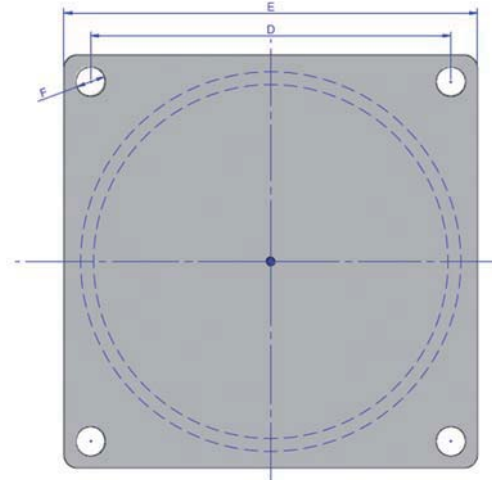
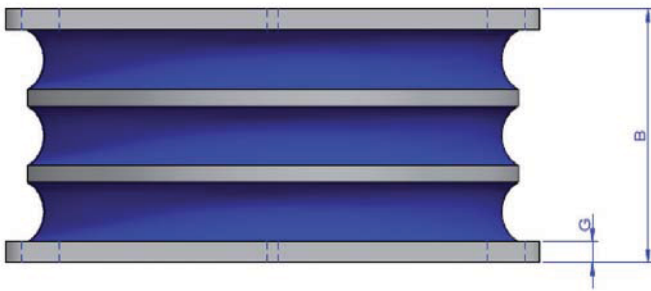
They can be supplied in 3 different hardness and 3 different sizes to suit applications where the compression load per mount is between 2 to 40 Tons.

APPLICATIONS:

High compression capacity, low shear stiffness and relatively low installed heights make the mounts ideal for: Vibratory rollers, Mills, Presses, Heavy machinery, Feeder screens.

Due to their high load capacity these mounts are also used as point bearings for the vibration isolation of building structures.

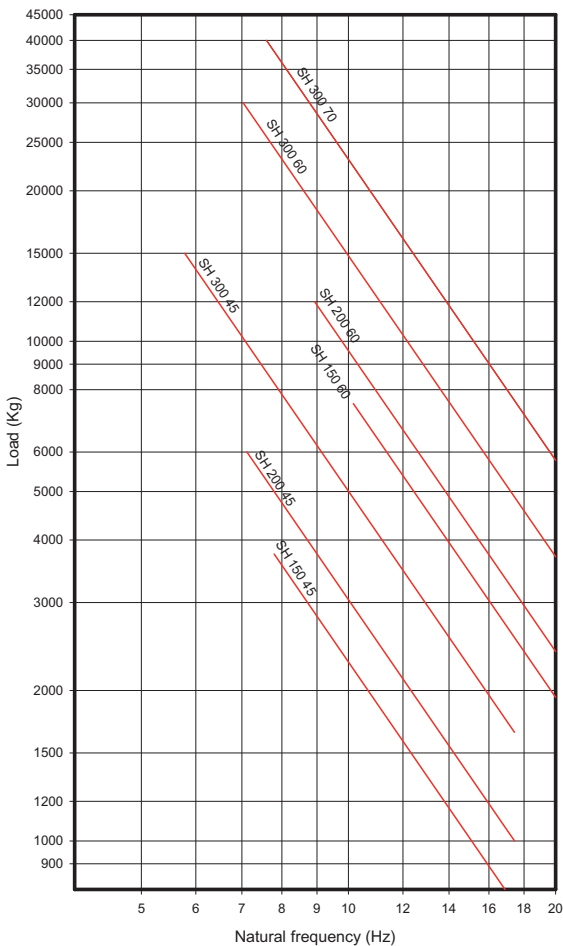




TYPE	B	D	E	F	G	AMC			WEIGHT (Kg)	
						45 Sh	60 Sh	70Sh		
SH 150	63	136	166	13,5	6	Ref	148201	148202		4,5
						Maxload(Kg.)	3.750	7.500	*	
SH 200	82	184	220	17	8	Ref	148204	148205		9
						Max load (Kg.)	6.000	12.000	*	
SH 300	120	270	310	22	10	Ref	148207	148208	148209	27
						Max load (Kg.)	15.000	30.000	40.000	

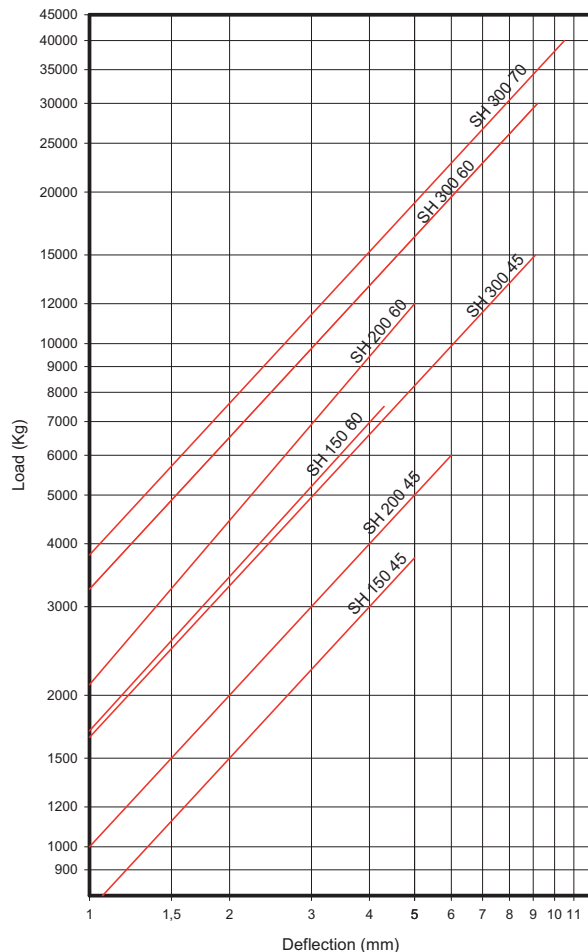
DYNAMIC SH

AMC NATURAL FREQUENCIES
MECANOCAUCHO® SH TYPE



SH DEFLECTION

AMC LOAD DEFLECTION GRAPHS
MECANOCAUCHO® SH TYPE



MECHANICAL EQUIPMENT

Products

Industrial, Off Highway & Rail

Imported Industrial Products

NF Mounts



The N.F.-type AMC Mecanocaucho[®] mounts are used in cases where light or heavy machines should not be fixed to the floor or ground.

The height adjustment system can be used to adjust the machines to the required level, thus insulating from vibrations and reducing noise. The AMC-Mecanocaucho[®] type NF comes with a tilting system allowing optimum adaptation to all surfaces.

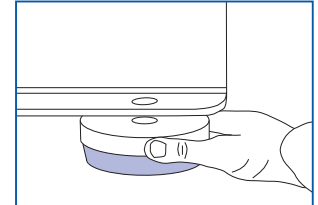
The elastomer used is a mixture of oil-resistant synthetic Nitrile Butadiene Rubber (NBR).

Height is adjusted by means of a screw, although this operation can even be performed once the machine has been assembled. The wide contact between the base of the machine guarantees good overall stability.

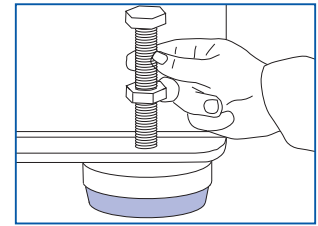
LEVELLING MACHINE MOUNTS

INSTALLATION INSTRUCTIONS

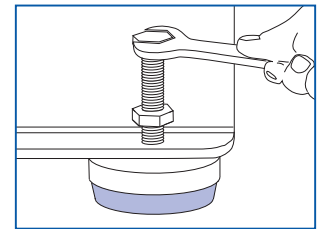
Lift the machine and insert the mount under it.



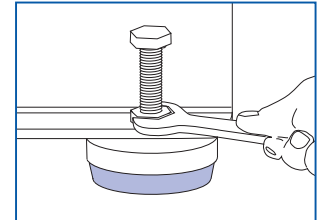
Insert and turn the screw manually until it slots into place.



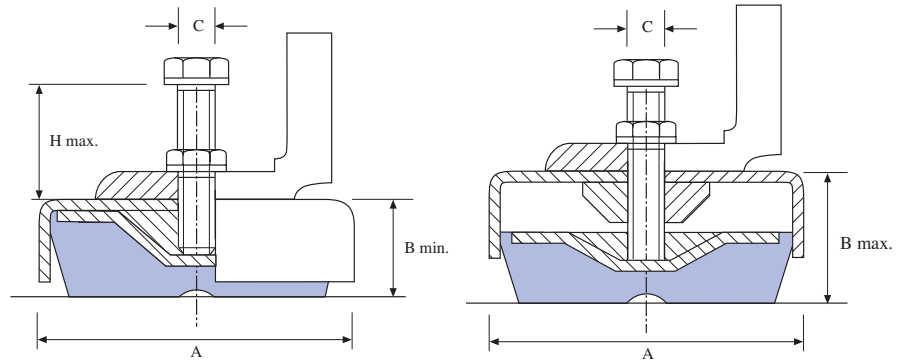
Adjust the height of the machine by turning the screw.



Block using the checknut.

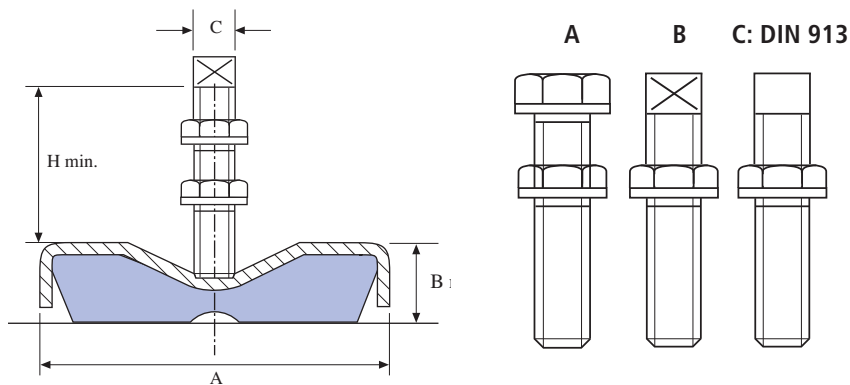


MECANOCAUCHO® TYPE NF



TYPE	A mm.	B mm.			H mm. Max	C	STATIC LOAD Nominal Kg.	DEFLECTION mm.	WEIGHT (g)	CODE
		Min	Max	Adjustm.						
NF-65	65	27	34	7	110	M-12	320	2	349	142001
NF-85	85	33	46	13	127	M-16	650	2	732	142002
NF-100	100	35	48	13	130	M-16	980	2	960	142003
NF-130	130	45	58	13	140	M-20	2.500	3	1.891	142004
NF-160	160	53	66	13	140	M-20	4.000	3	3.397	142005
NF-200	200	55	68	13	100	M-24	5.000	3	4.958	142006
NF-250	250	67	85	18	110	M-30	7.000	3	8.575	142007

MECANOCAUCHO® NFR TYPE



TYPE	A mm.	B mm.	H mm.	C	STATIC LOAD Nominal Kg.	DEFLECTION mm.	WEIGHT (g)	CODE
NFR-85	85	33	100	M-16	650	2	713	142009
NFR-100	100	35	100	M-16	980	2	929	142010
NFR-130	130	45	130	M-20	2.500	3	1.832	142011
NFR-160	160	53	130	M-20	4.000	3	3.330	142012
NFR-200	200	55	140	M-24	5.000	3	4.924	142013

MECHANICAL EQUIPMENT

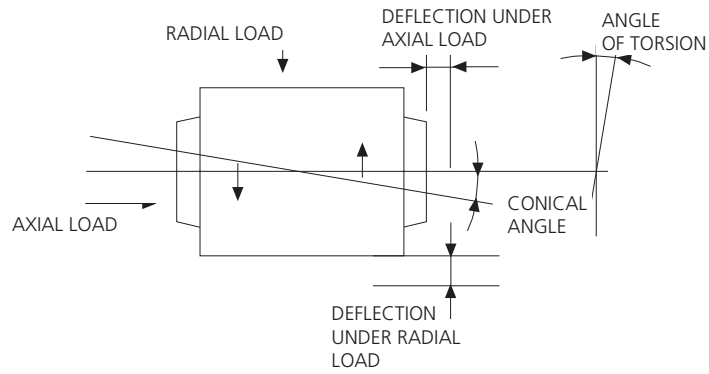
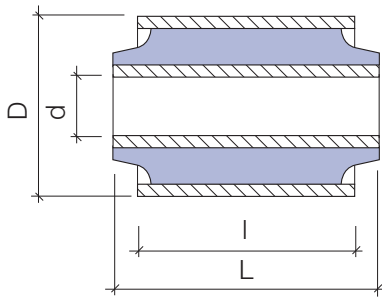
Products

Industrial, Off Highway & Rail

Imported Industrial Products

Bushings

BUSHINGS



CODE	DIMENSIONS(mm)				ANGLE		Axial Max. Load		Radial Max. Load	
	d	D	L	l	Mt max Nm	ϕ max °	F _a max N	S _a max mm	Fr max N	sr max mm
154003	8	22	30	25	4	14	380	1,3	800	0,45
154005	10	22	30	25	7	10	500	0,9	1875	0,25
154006	10	22	32	30	9	10	600	0,9	2250	0,25
154103	12	30	34	28	10	15	580	1,7	1750	0,55
154077	12	32	59	55	19	16	1200	1,7	7000	0,65
154107	14	27	45	40	20	10	935	1,3	4400	0,35
154020	16	32	28	25	12	10	700	1,4	1560	0,4
154021	18	36	58,5	48,5	35	10	1420	1,6	7350	0,45
154073	20	45	70	64	55	15	2200	2,5	10000	0,85
154082	24	45	55	44	55	11	1840	1,8	8650	0,6
154079	32	66	55	47	77	15	2450	3,9	8400	1,3
154075	45	75	100	90	320	10	6300	3,1	35000	0,9
154041	50	80	110	100	450	9	7800	2,8	55000	0,85